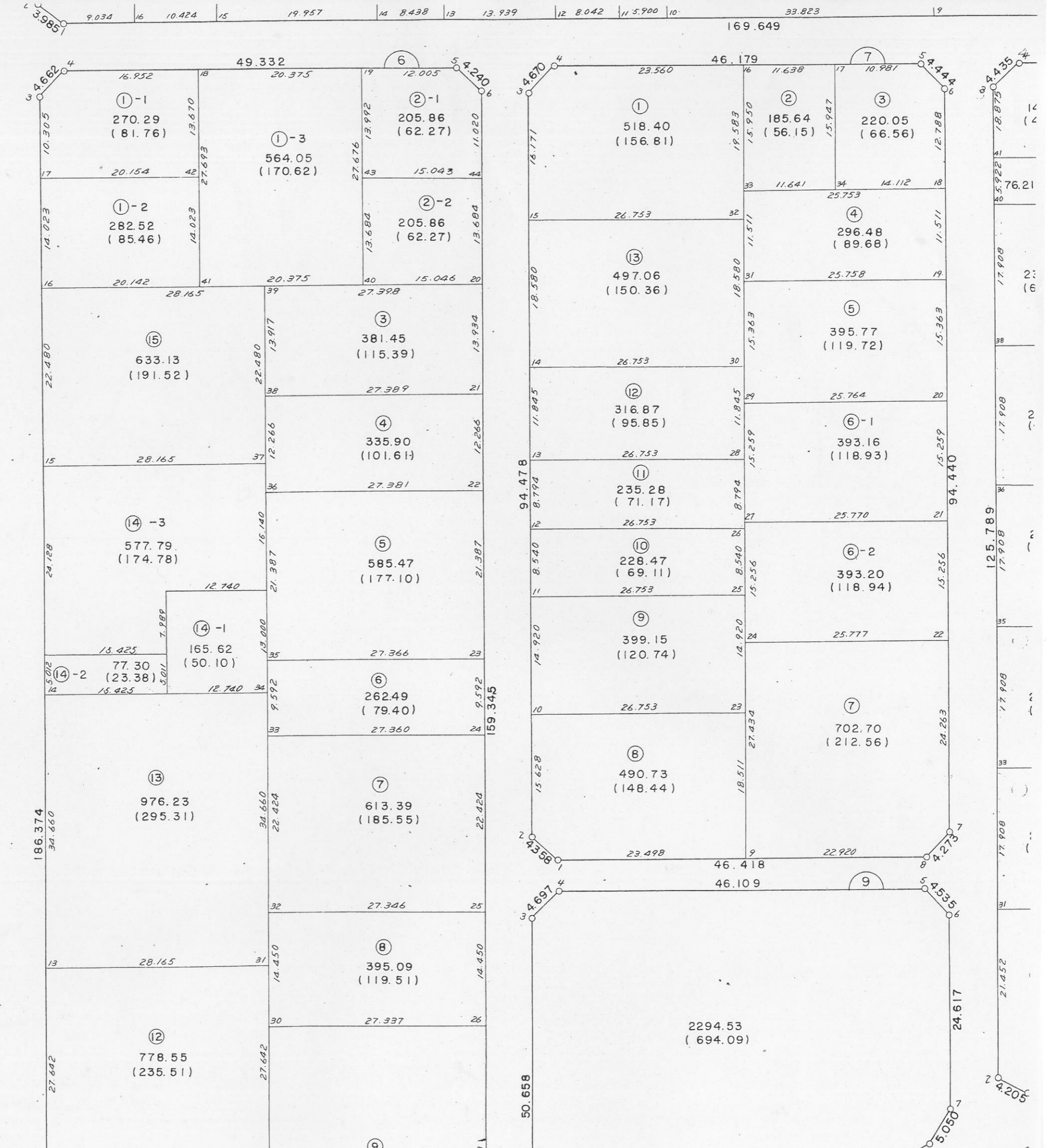


20
 37)
 1
 2
 0
 0)
 4
 8
 9)
 1
 24
 01)
 25
 764
 1)
 764
 7
 2
 51
)
 3
 7.03
 4.97)
 21.419
 19
 4
 6.27
 7.34)
 27.371
 .027

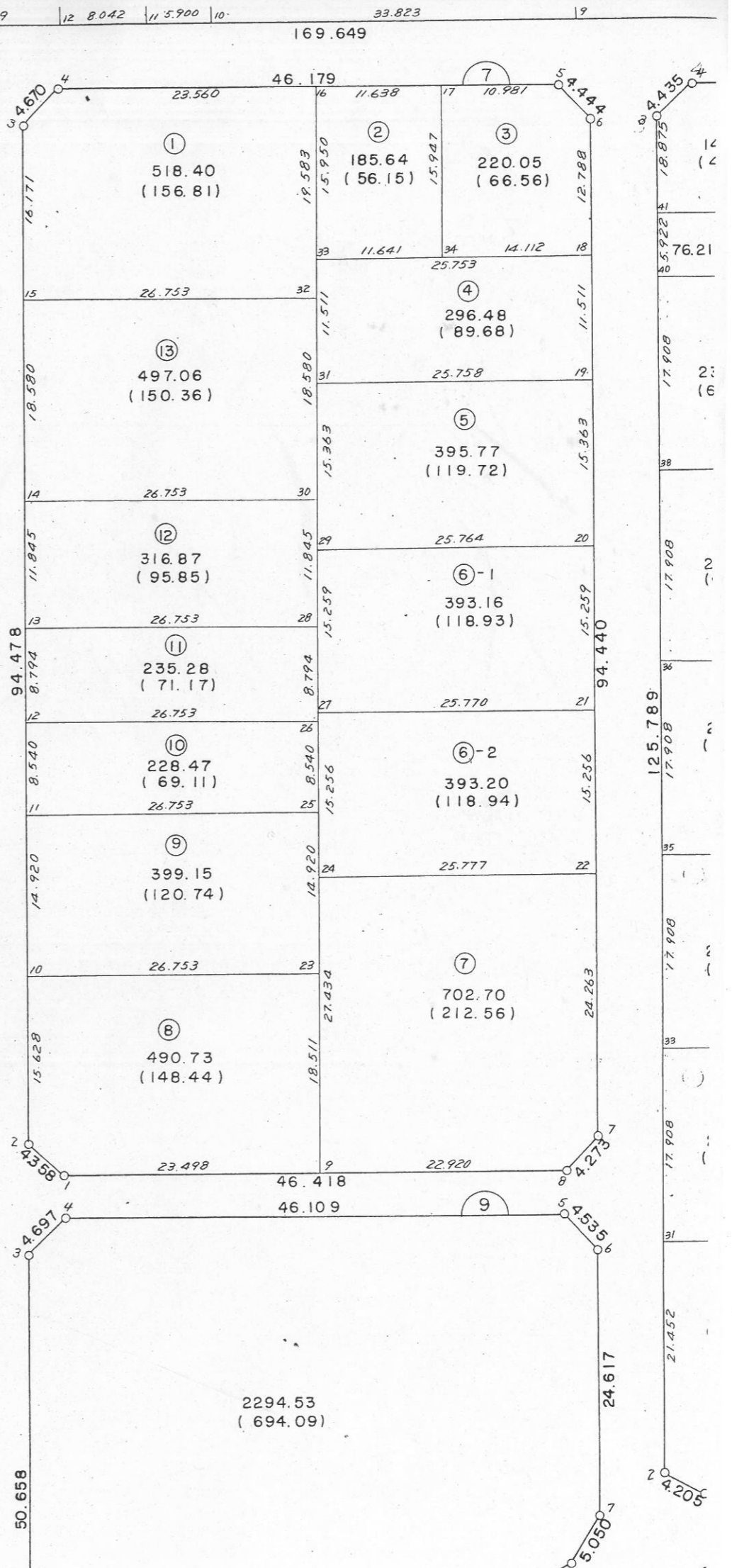
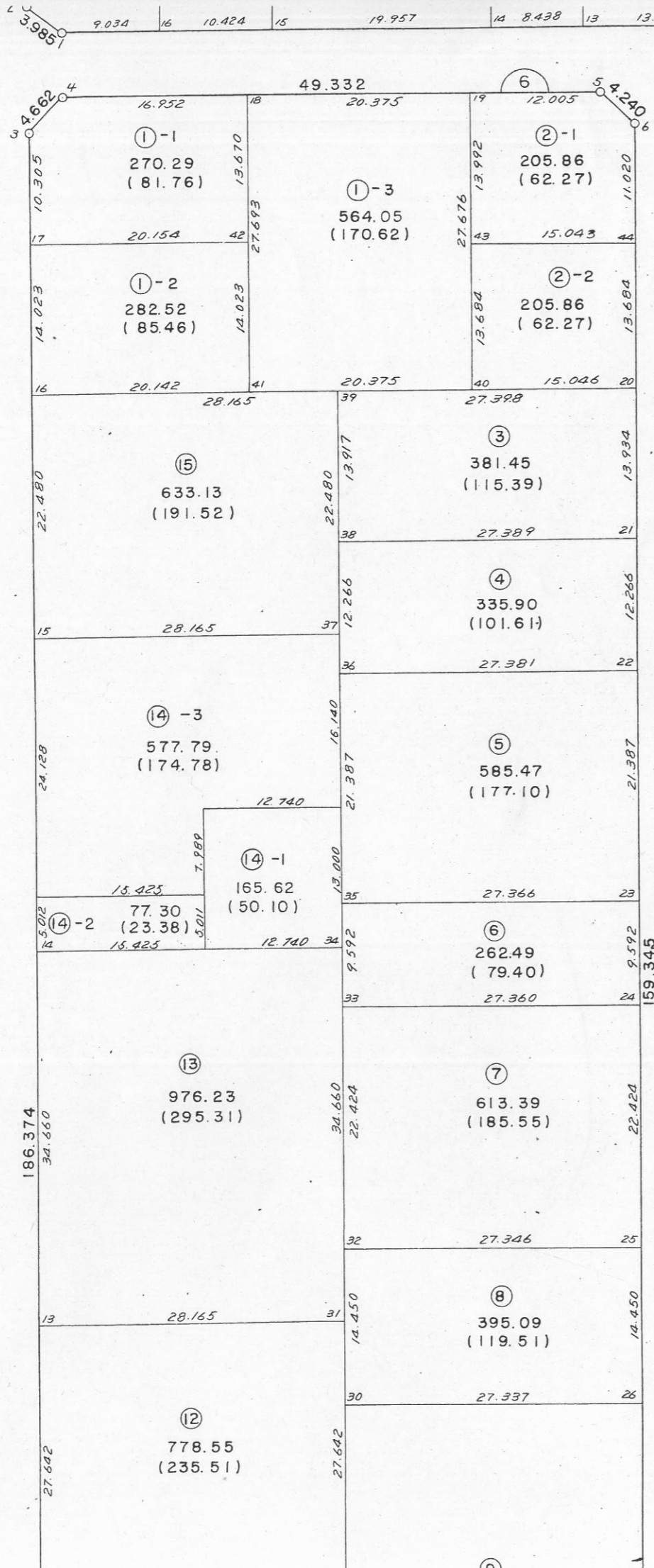


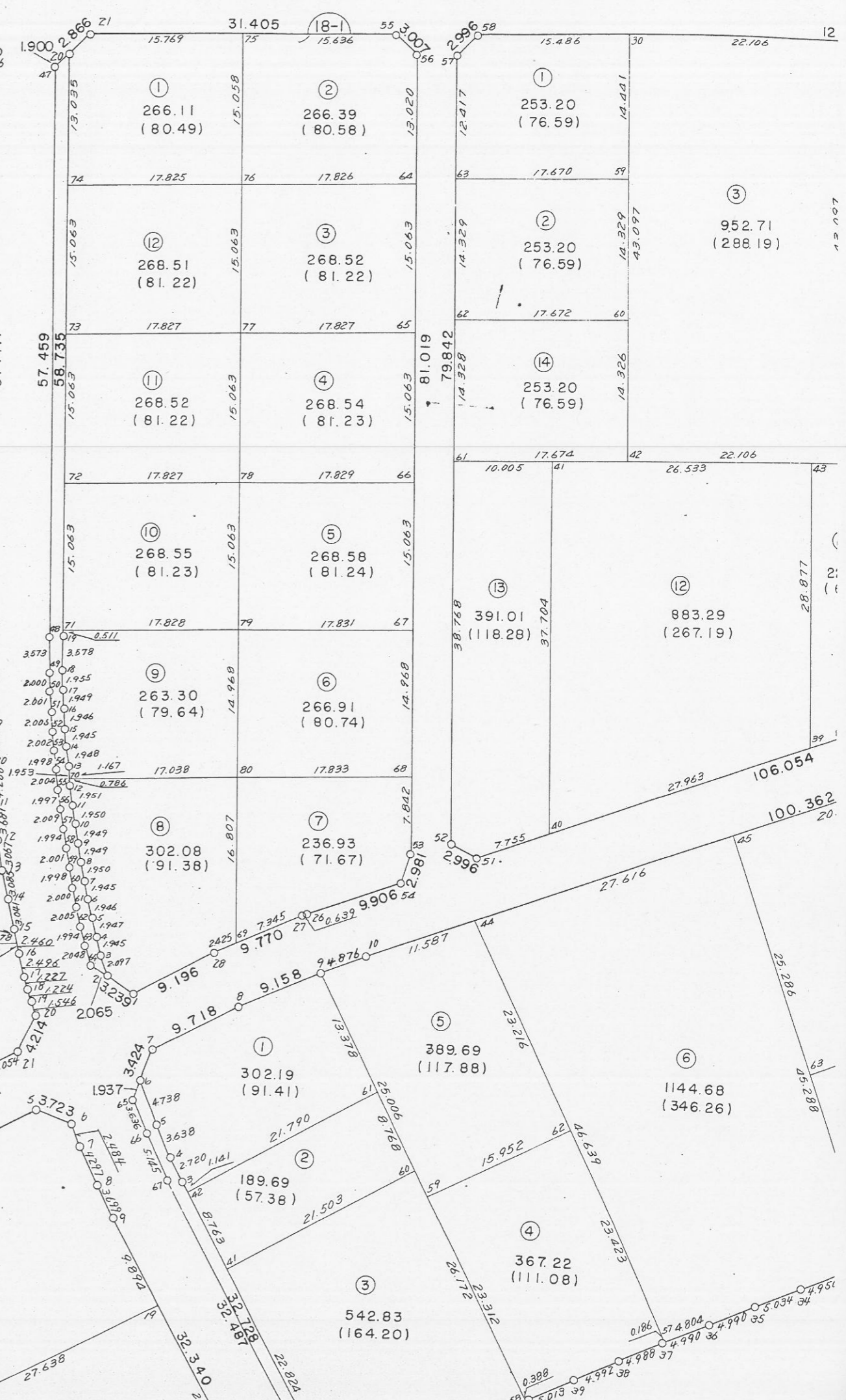
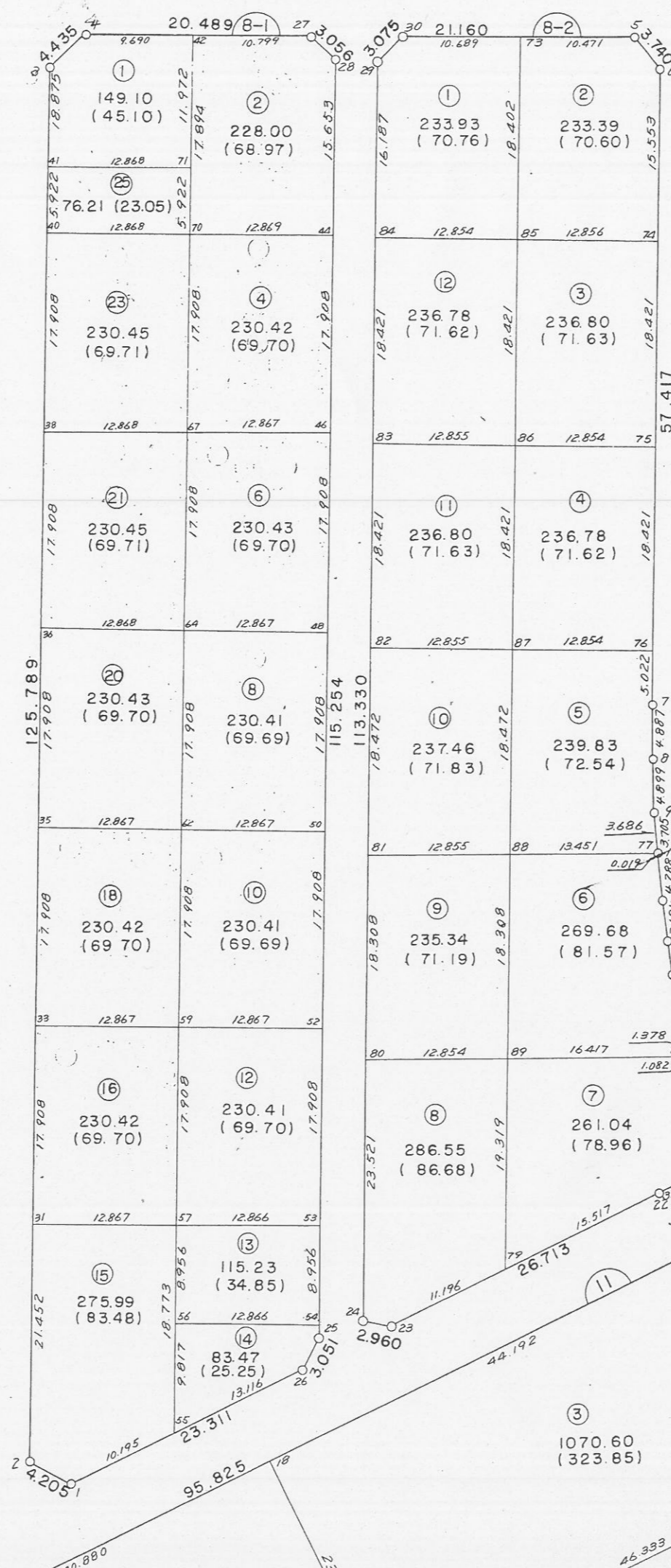
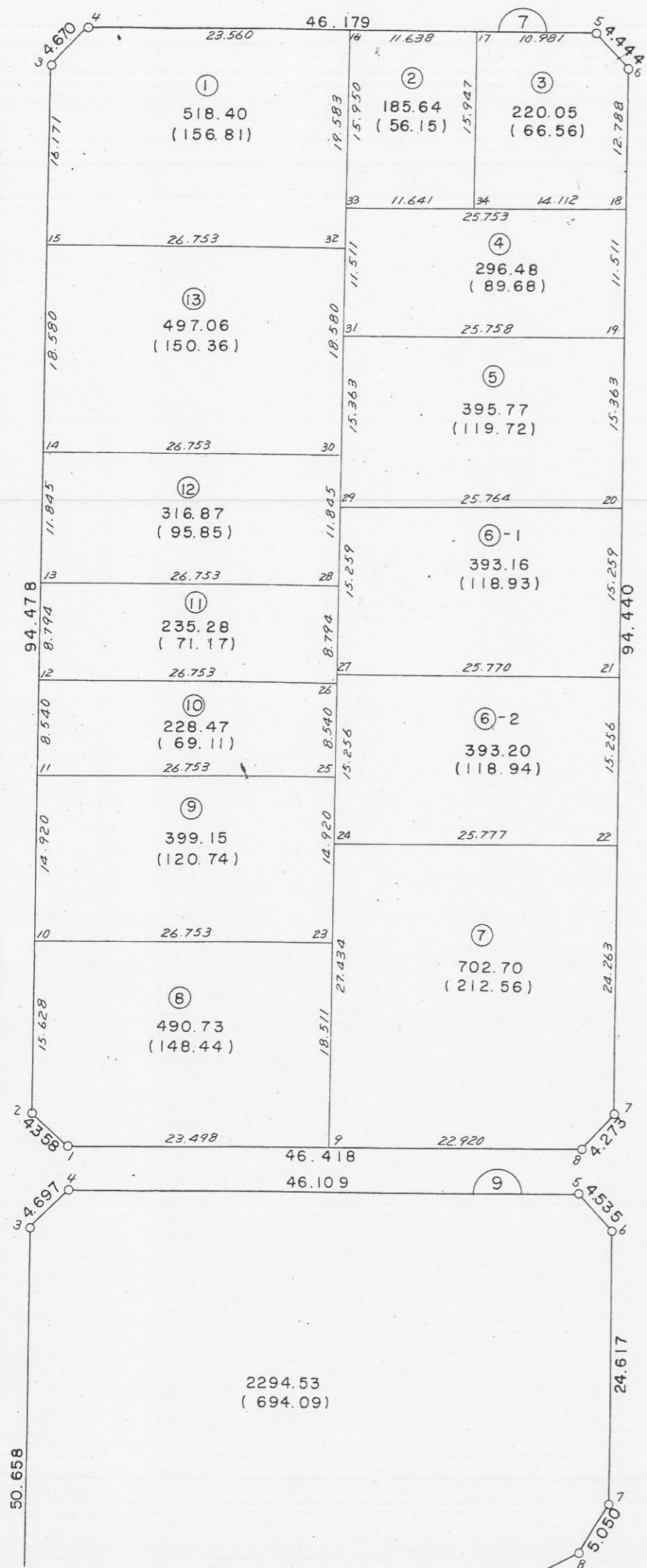


20
37)
1
2
00
8
9)
1
24
01)
164
25
764
5
1)
764
7
2
51
3)
7.03
4.97)
21.419
4)
6.27
7.371
027

10.72
7.495
23
24
20.043
20.820
11.514
18.624
4.236
4.473
23.711
16.203
19
7.371

126.772
186.374
186.374
125.789









11-2
407.22
(123.18)

11-1
407.21
(123.18)

10
426.93
(129.14)

2
724.28
(219.09)

1
683.62
(206.79)

10
389.32
(117.77)

5
664.73
(210.08)

6-1
52.37
(36.84)

4
546.05
(165.18)

1
264.73
(80.03)

3
572.55
(173.19)

2
724.28
(219.09)

1
683.62
(206.79)

7
531.68
(160.83)

9
199.55
(60.36)

10
389.32
(117.77)

2
428.33
(129.57)

1
264.73
(80.03)

3
253.96
(76.82)

4
207.69
(62.82)

3
572.55
(173.19)

2
724.28
(219.09)

6
666.21
(201.52)

7
531.68
(160.83)

8
211.26
(63.90)

9
199.55
(60.36)

10
389.32
(117.77)

1
264.73
(80.03)

3
253.96
(76.82)

10
326.04
(98.62)

3
572.55
(173.19)

2
724.28
(219.09)

6
666.21
(201.52)

7
531.68
(160.83)

8
211.26
(63.90)

9
199.55
(60.36)

10
389.32
(117.77)

1
264.73
(80.03)

3
253.96
(76.82)

1
326.04
(98.62)

3
572.55
(173.19)

2
724.28
(219.09)

6
666.21
(201.52)

7
531.68
(160.83)

8
211.26
(63.90)

9
199.55
(60.36)

10
389.32
(117.77)

1
264.73
(80.03)

3
253.96
(76.82)

2
949.94
(287.35)

3
572.55
(173.19)

2
724.28
(219.09)

6
666.21
(201.52)

7
531.68
(160.83)

8
211.26
(63.90)

9
199.55
(60.36)

10
389.32
(117.77)

1
264.73
(80.03)

3
253.96
(76.82)

6
453.09
(137.06)

3
572.55
(173.19)

2
724.28
(219.09)

6
666.21
(201.52)

7
531.68
(160.83)

8
211.26
(63.90)

9
199.55
(60.36)

10
389.32
(117.77)

1
264.73
(80.03)

3
253.96
(76.82)

7
424.52
(128.41)

3
572.55
(173.19)

2
724.28
(219.09)

6
666.21
(201.52)

7
531.68
(160.83)

8
211.26
(63.90)

9
199.55
(60.36)

10
389.32
(117.77)

1
264.73
(80.03)

3
253.96
(76.82)

8
424.41
(128.38)

3
572.55
(173.19)

2
724.28
(219.09)

6
666.21
(201.52)

7
531.68
(160.83)

8
211.26
(63.90)

9
199.55
(60.36)

10
389.32
(117.77)

1
264.73
(80.03)

3
253.96
(76.82)

5
596.09
(180.32)

3
572.55
(173.19)

2
724.28
(219.09)

6
666.21
(201.52)

7
531.68
(160.83)

8
211.26
(63.90)

9
199.55
(60.36)

10
389.32
(117.77)

1
264.73
(80.03)

3
253.96
(76.82)

6
453.09
(137.06)

3
572.55
(173.19)

2
724.28
(219.09)

6
666.21
(201.52)

7
531.68
(160.83)

8
211.26
(63.90)

9
199.55
(60.36)

10
389.32
(117.77)

1
264.73
(80.03)

3
253.96
(76.82)



1368.27
(413.90)

87.137

572.55
(173.19)

531.68
(160.83)

549.24
(166.14)

3.768

275.99
(83.48)

207.69
(62.82)

602.00
(182.10)

666.21
(201.52)

447.90
(135.49)

59.338

115.23
(34.85)

949.94
(287.35)

424.41
(128.38)

424.52
(128.41)

333.47
(100.87)

12.204

83.47
(25.25)

326.04
(98.62)

453.09
(137.06)

424.41
(128.38)

665.64
(210.35)

23.679

286.55
(86.68)

1070.60
(323.85)

596.09
(180.32)

712.55
(215.54)

405.59
(122.69)

23.679

261.04
(78.96)

542.83
(164.20)

473.68
(143.29)

277.51
(83.94)

277.67
(83.99)

45.718

26.104
(78.96)

367.22
(111.08)

452.36
(136.84)

846.88
(256.18)

416.68
(126.04)

9.827

275.99
(83.48)

302.19
(91.41)

171.91
(52.00)

198.11
(59.9)

198.11
(59.9)

21.614

275.99
(83.48)

389.69
(117.88)

695.41
(210.37)

386.76
(115)

386.76
(115)

10.639

275.99
(83.48)

302.19
(91.41)

171.91
(52.00)

198.11
(59.9)

198.11
(59.9)

21.614



95.825
342.85 (164.20)
712.55 (215.54)
596.09 (180.32)
453.09 (137.06)
4.52 (8.41)
712.55 (215.54)
872.97 (264.07)
1052.41 (318.35)
359/73 (108.82)
452.36 (136.84)
333.54 (100.89)
118.76 (35.92)
695.45 (210.37)
350.16 (105.92)
447.47 (135.36)
846.88 (256.18)
132.31 (40.02)
473.68 (143.29)
334.09 (101.06)
207.64 (62.81)
277.67 (83.99)
405.59 (122.69)
333.47 (100.87)
665.64 (210.35)
277.51 (83.94)
49.717
45.718
416.68 (126.04)
386.76 (116.99)
399.70 (30.16)
340.35 (102.95)
171.91 (52.00)
198.33 (59.99)
603.18 (182.46)
318.93 (96.47)
359.71 (108.81)
1036.84 (313.64)
1231.18 (372.43)
240.68 (72.80)
203.71 (61.62)
397.47 (120.23)
714.04 (215.99)
240.68 (72.80)
203.71 (61.62)
397.47 (120.23)
714.04 (215.99)
240.68 (72.80)
203.71 (61.62)
397.47 (120.23)
714.04 (215.99)





78 50.000 79 50.000 80 50.000 81 50.000 82

