



松戸町2丁目  
1:500

2,047,239

2,227,955

6,515,368

1,278,734

1,436,765

243,076

459,040

2,010,510

703,193

612

199,503

23,826

20,149

20,909

35,970

33,995

9,274

77-50-33

77-50-33

114,565

67

①

②

⑥①

①

⑥⑤

③

④

②

⑤

②

②

⑥

352-03-31

352-34-26

352-31-42

337-55-21

83-52-2

99-18-51

5-43-50-249

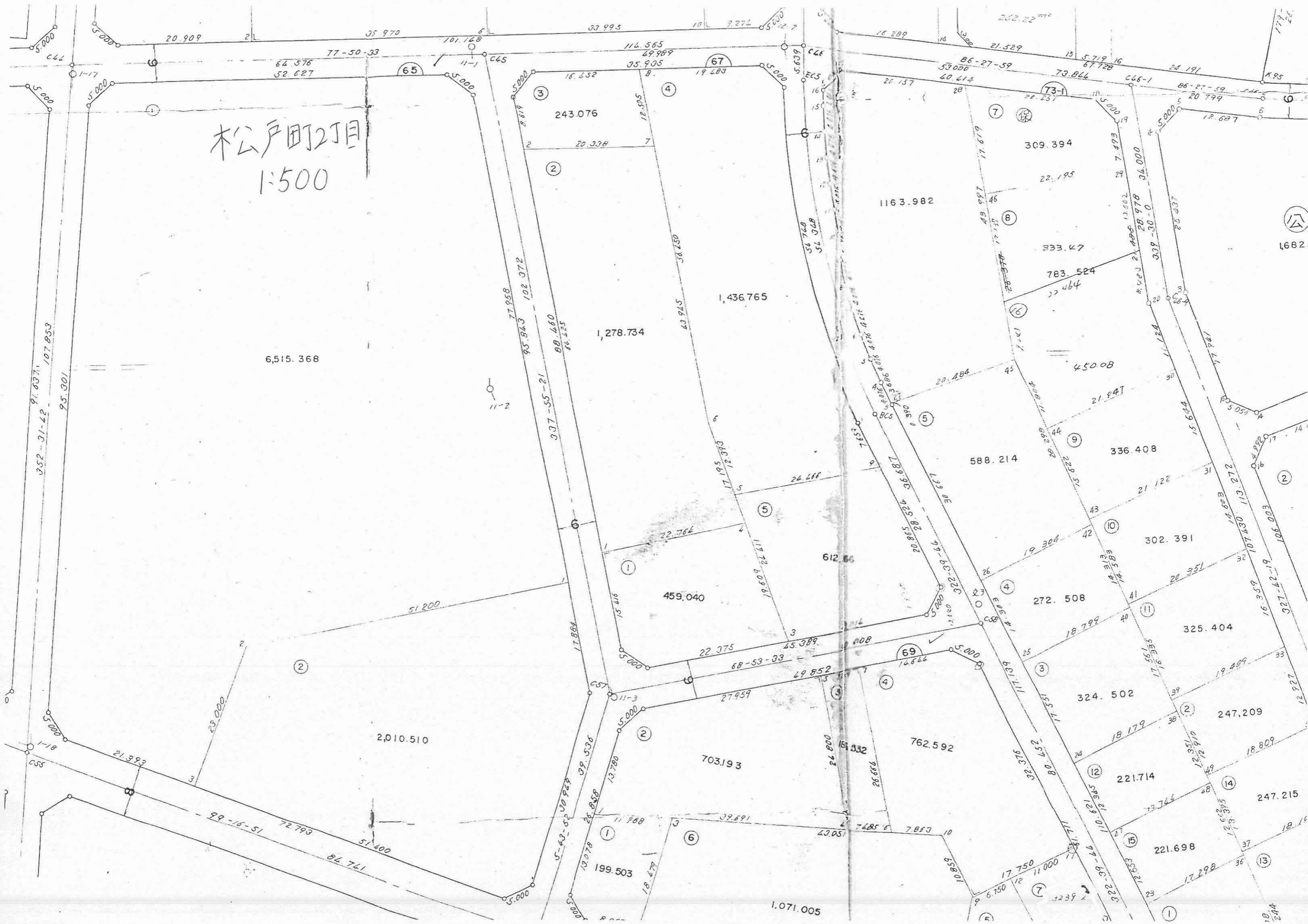
松戸町2丁目

1:500

松戸町2丁目  
1:500



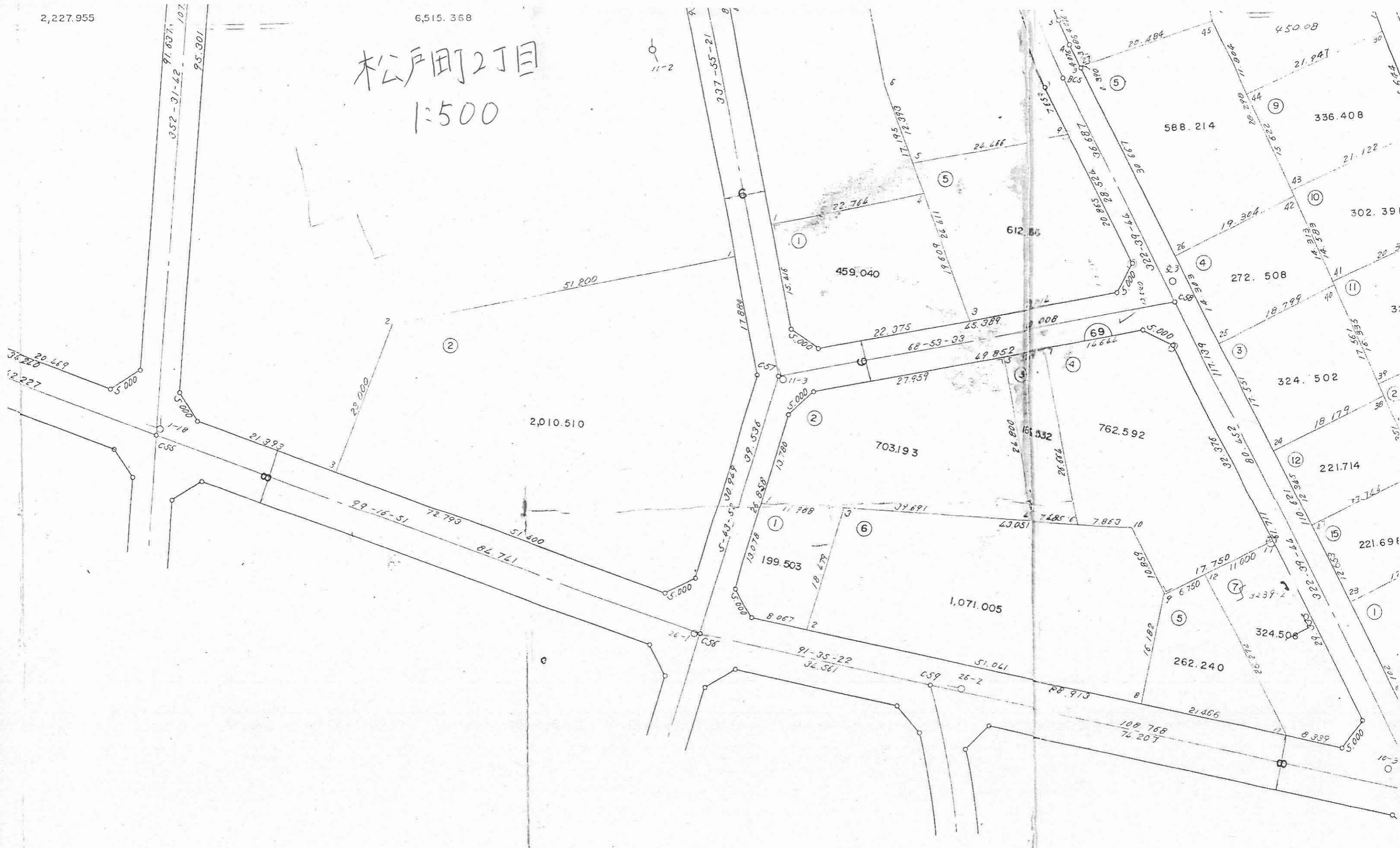
松戸町2丁目  
1:500



1682



松戸町2丁目  
1:500



11-2

337-55-21

17-195-12-393

588.214

336.408

2

1

69

2,010.510

703.193

762.592

324.502

1

6

1,071.005

199.503

221.714

221.698

262.240

324.508

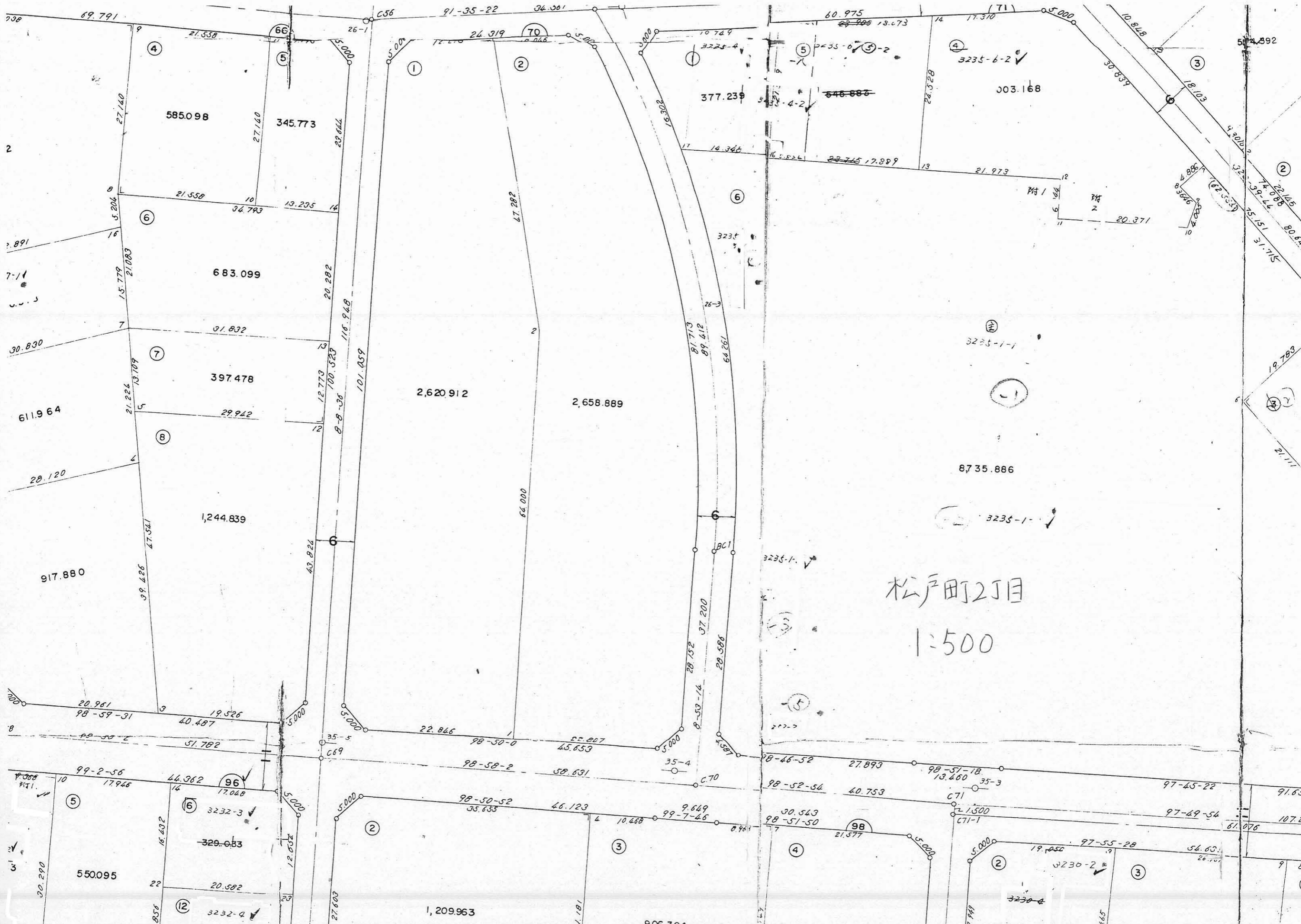
91-35-22

214.66

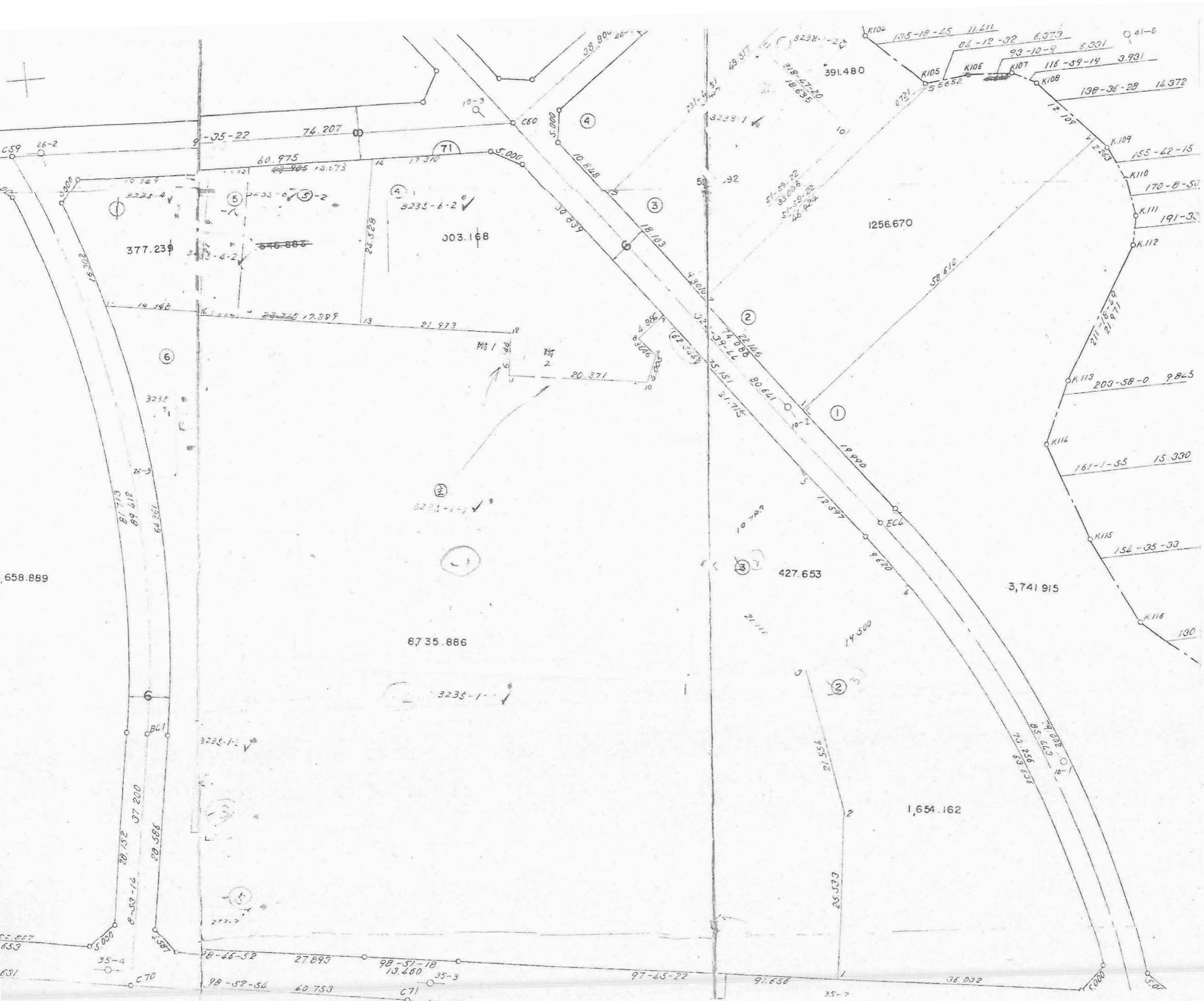
108.788

74.207

10-3



松戸町2丁目  
1:500



658.889

377.23

303.168

1256.670

8735.886

427.653

3,741.915

1,654.162

Hand-drawn cadastral map showing land parcels, roads, and utility lines. The map includes numerous numerical annotations such as plot numbers (e.g., 1-7, 10-3, 10-4, 10-5, 10-6, 10-7, 10-8, 10-9, 10-10, 10-11, 10-12, 10-13, 10-14, 10-15, 10-16, 10-17, 10-18, 10-19, 10-20, 10-21, 10-22, 10-23, 10-24, 10-25, 10-26, 10-27, 10-28, 10-29, 10-30, 10-31, 10-32, 10-33, 10-34, 10-35, 10-36, 10-37, 10-38, 10-39, 10-40, 10-41, 10-42, 10-43, 10-44, 10-45, 10-46, 10-47, 10-48, 10-49, 10-50, 10-51, 10-52, 10-53, 10-54, 10-55, 10-56, 10-57, 10-58, 10-59, 10-60, 10-61, 10-62, 10-63, 10-64, 10-65, 10-66, 10-67, 10-68, 10-69, 10-70, 10-71, 10-72, 10-73, 10-74, 10-75, 10-76, 10-77, 10-78, 10-79, 10-80, 10-81, 10-82, 10-83, 10-84, 10-85, 10-86, 10-87, 10-88, 10-89, 10-90, 10-91, 10-92, 10-93, 10-94, 10-95, 10-96, 10-97, 10-98, 10-99, 10-100), area values (e.g., 377.23, 303.168, 1256.670, 8735.886, 427.653, 3,741.915, 1,654.162), and other identifiers (e.g., 3235-6-2, 3235-1-1, 3235-1-2, 3235-1-3, 3235-1-4, 3235-1-5, 3235-1-6, 3235-1-7, 3235-1-8, 3235-1-9, 3235-1-10, 3235-1-11, 3235-1-12, 3235-1-13, 3235-1-14, 3235-1-15, 3235-1-16, 3235-1-17, 3235-1-18, 3235-1-19, 3235-1-20, 3235-1-21, 3235-1-22, 3235-1-23, 3235-1-24, 3235-1-25, 3235-1-26, 3235-1-27, 3235-1-28, 3235-1-29, 3235-1-30, 3235-1-31, 3235-1-32, 3235-1-33, 3235-1-34, 3235-1-35, 3235-1-36, 3235-1-37, 3235-1-38, 3235-1-39, 3235-1-40, 3235-1-41, 3235-1-42, 3235-1-43, 3235-1-44, 3235-1-45, 3235-1-46, 3235-1-47, 3235-1-48, 3235-1-49, 3235-1-50, 3235-1-51, 3235-1-52, 3235-1-53, 3235-1-54, 3235-1-55, 3235-1-56, 3235-1-57, 3235-1-58, 3235-1-59, 3235-1-60, 3235-1-61, 3235-1-62, 3235-1-63, 3235-1-64, 3235-1-65, 3235-1-66, 3235-1-67, 3235-1-68, 3235-1-69, 3235-1-70, 3235-1-71, 3235-1-72, 3235-1-73, 3235-1-74, 3235-1-75, 3235-1-76, 3235-1-77, 3235-1-78, 3235-1-79, 3235-1-80, 3235-1-81, 3235-1-82, 3235-1-83, 3235-1-84, 3235-1-85, 3235-1-86, 3235-1-87, 3235-1-88, 3235-1-89, 3235-1-90, 3235-1-91, 3235-1-92, 3235-1-93, 3235-1-94, 3235-1-95, 3235-1-96, 3235-1-97, 3235-1-98, 3235-1-99, 3235-1-100). The map also shows various lines representing roads, utility lines, and boundaries. There are also some handwritten notes and symbols, such as checkmarks and small circles.



松戸町2丁目  
1:500



松戸町2丁目  
1:500

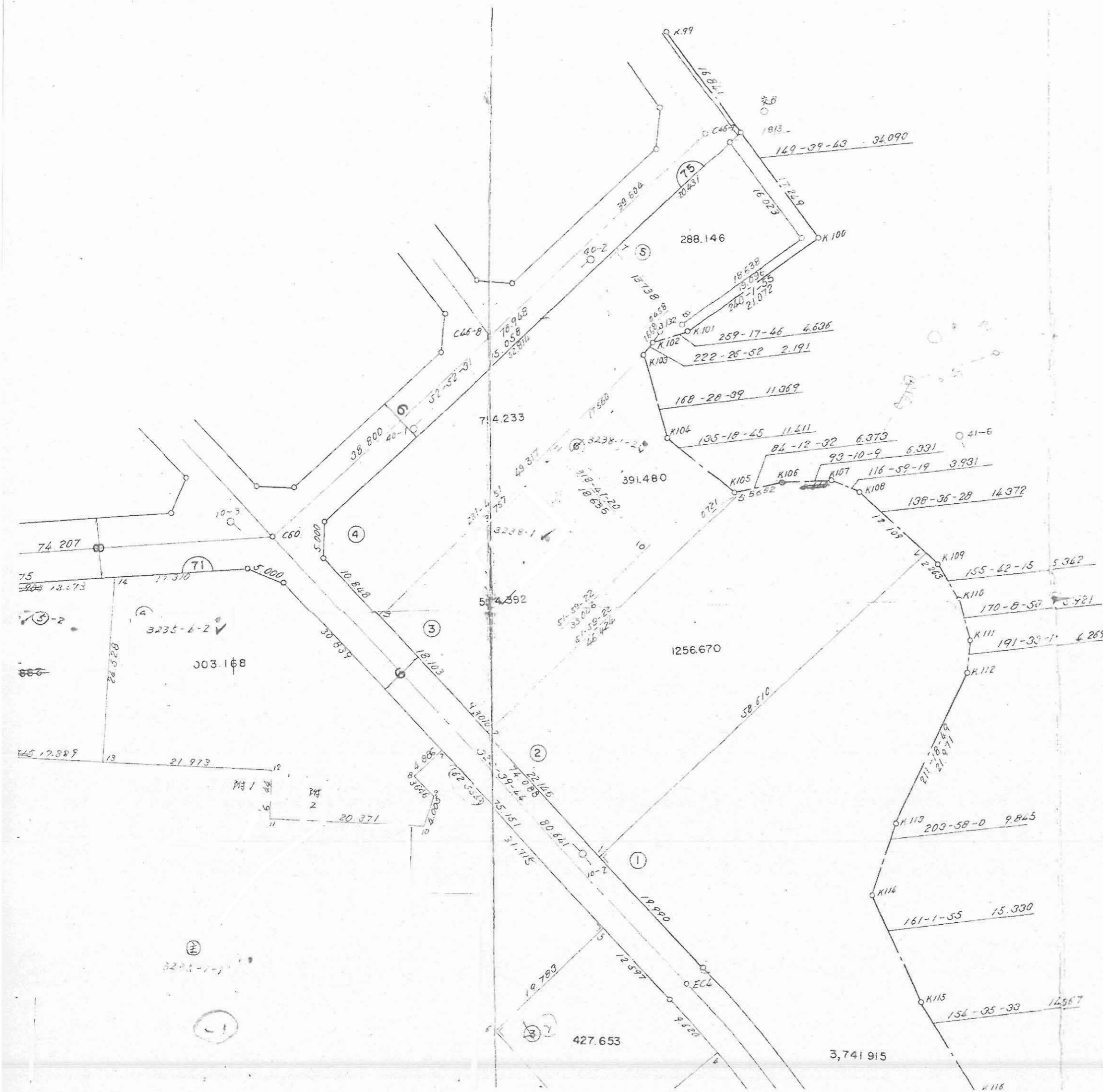
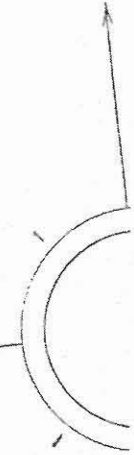


64500



# 松戸町2丁目

1:500



IP. 1  
 IA 34-9-11  
 R 150.000  
 TL 46.079  
 CL 89.412  
 S.L 6.918

IP. 4  
 IA 58-31  
 R 150.  
 TL 84.  
 CL 153.  
 S.L 21.

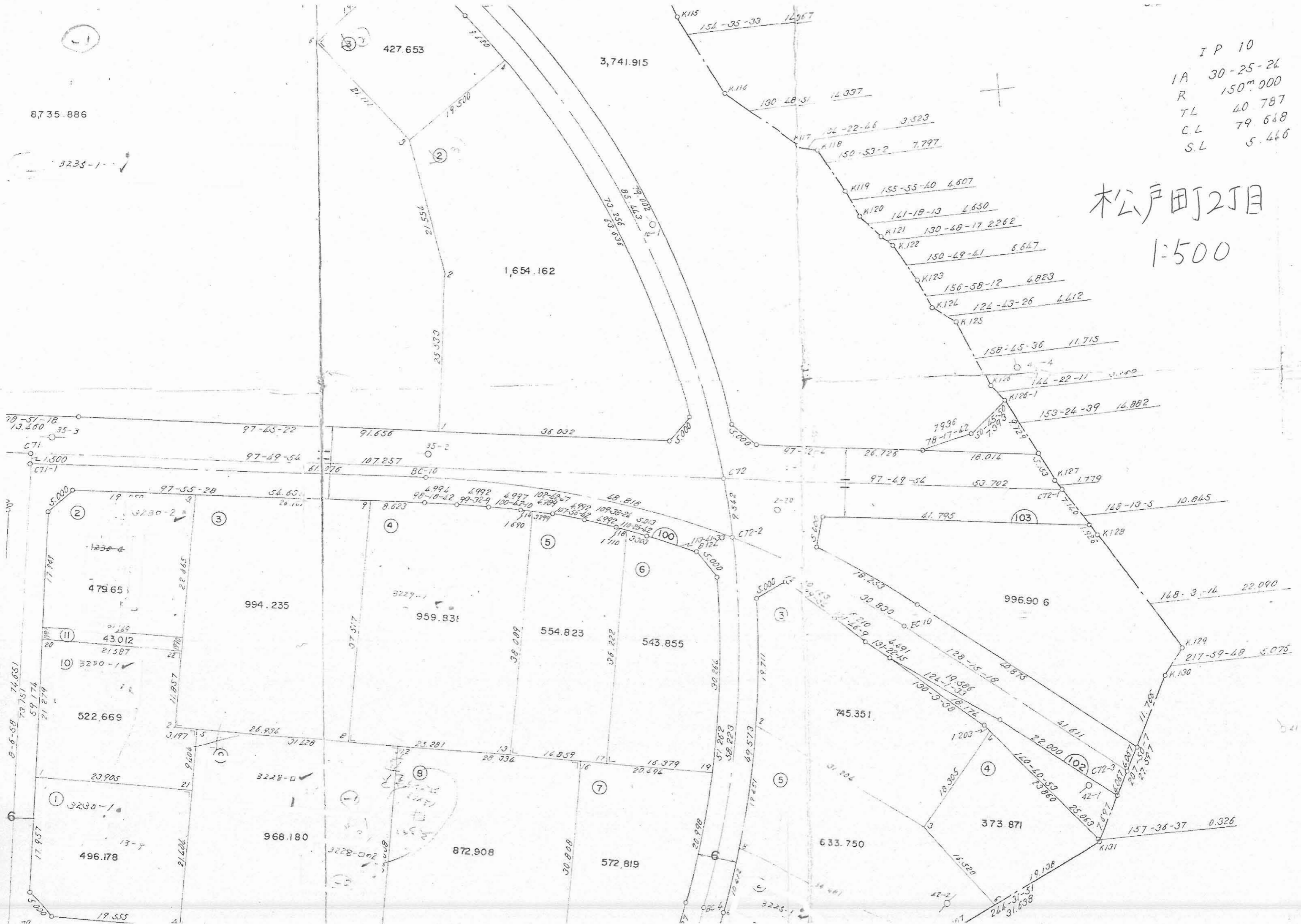
IP. 1  
 IA 3

8735.886

3235-1

IP 10  
 IA 30-25-24  
 R 150<sup>m</sup>.000  
 TL 40.787  
 CL 79.648  
 SL 5.446

松戸町2丁目  
 1:500

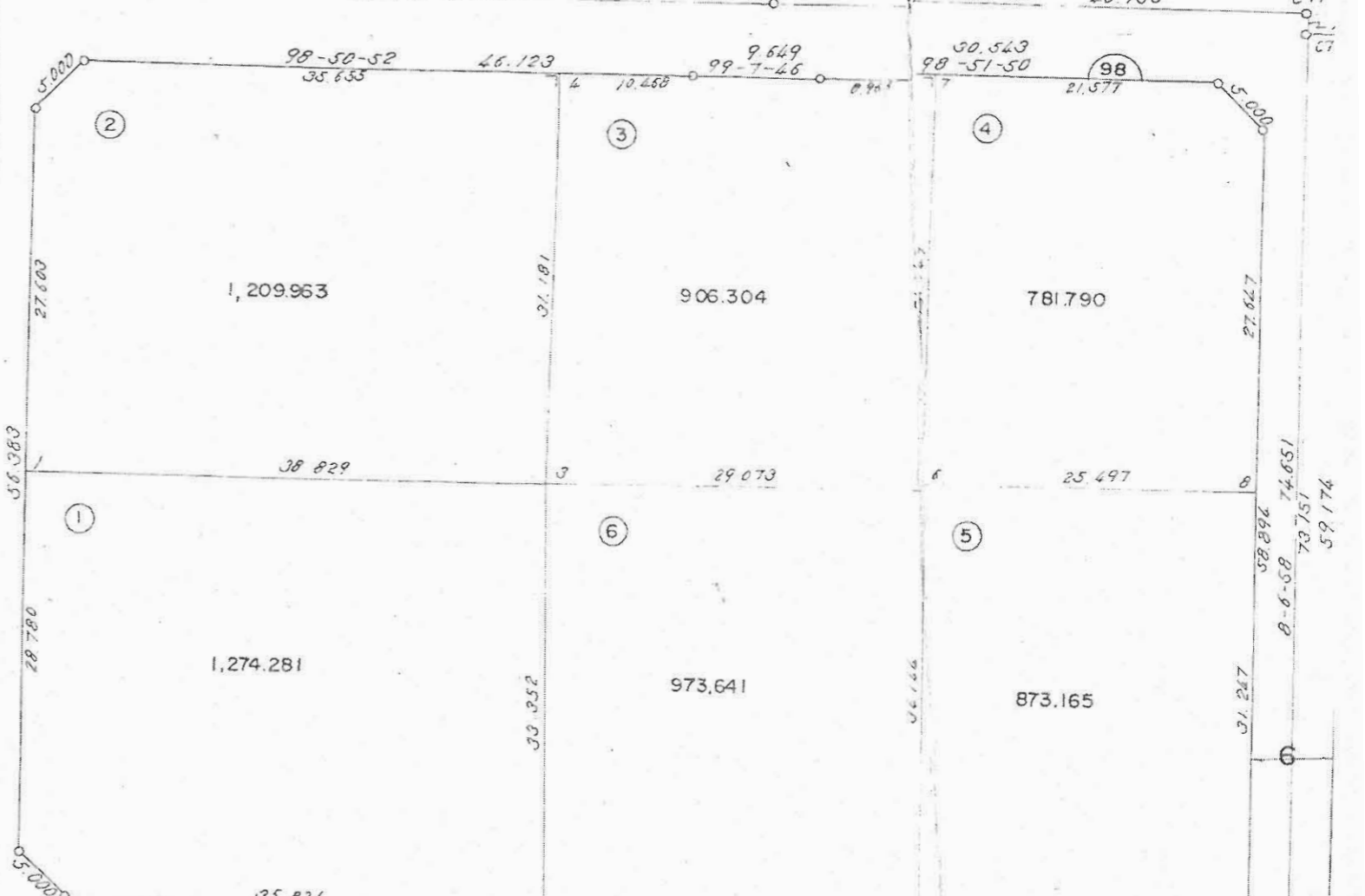
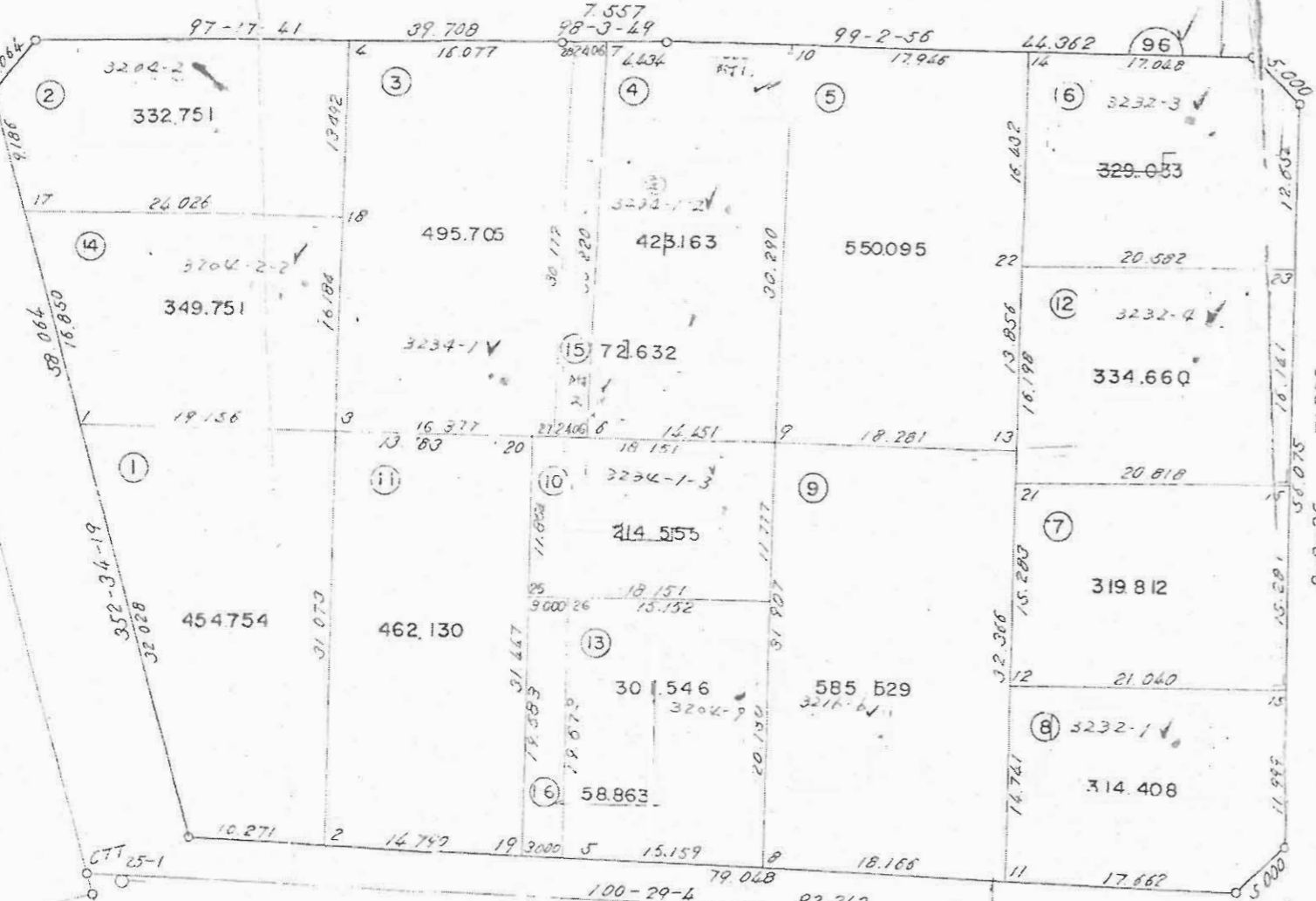


41-3



松戸町2丁目  
1:500

2,527,924





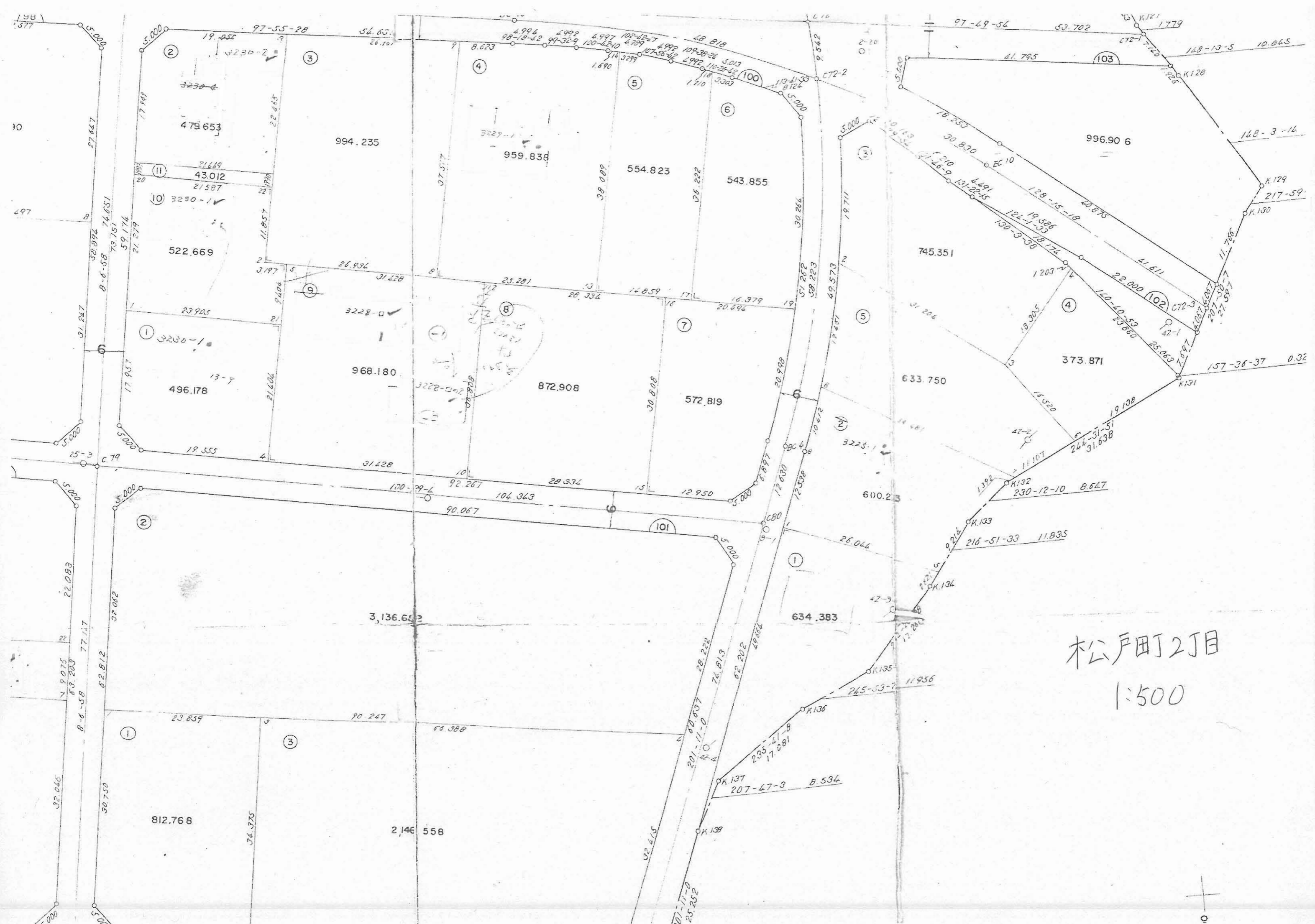
松戸町2丁目  
1:500





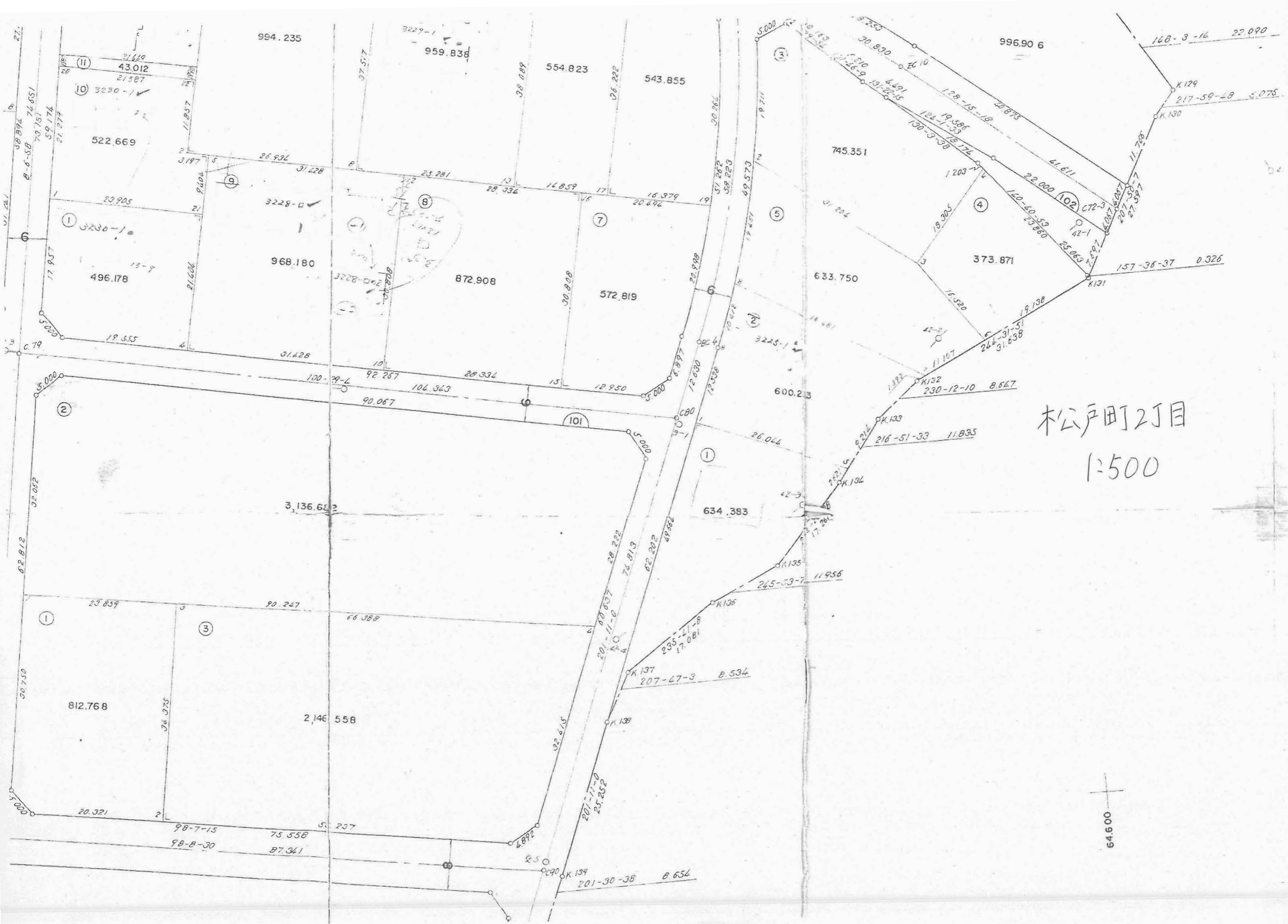
松戸町2丁目  
1:500

K 139  
201-30  
K 140



松戸町2丁目  
1:500





松戸町2丁目  
1:500

