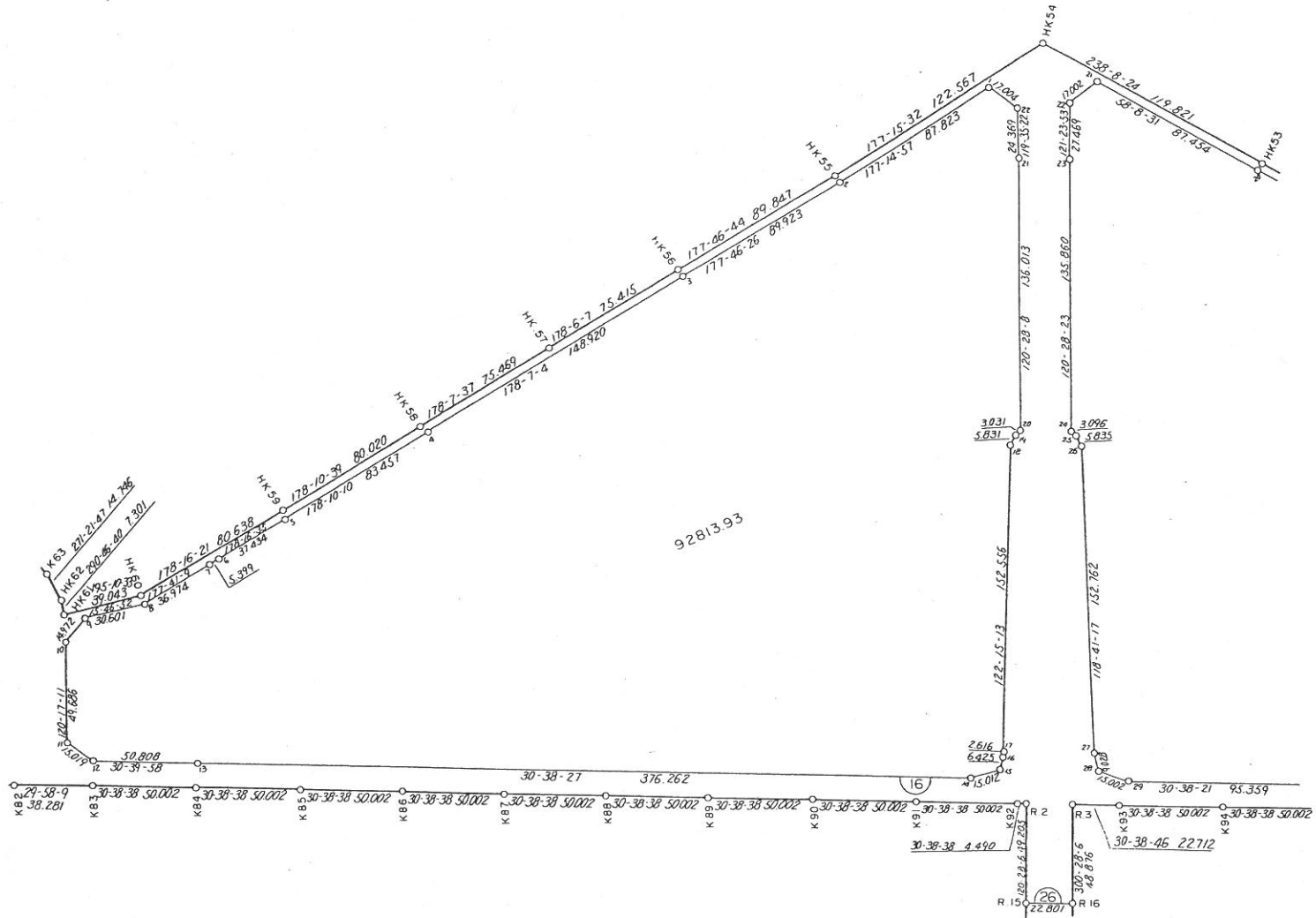


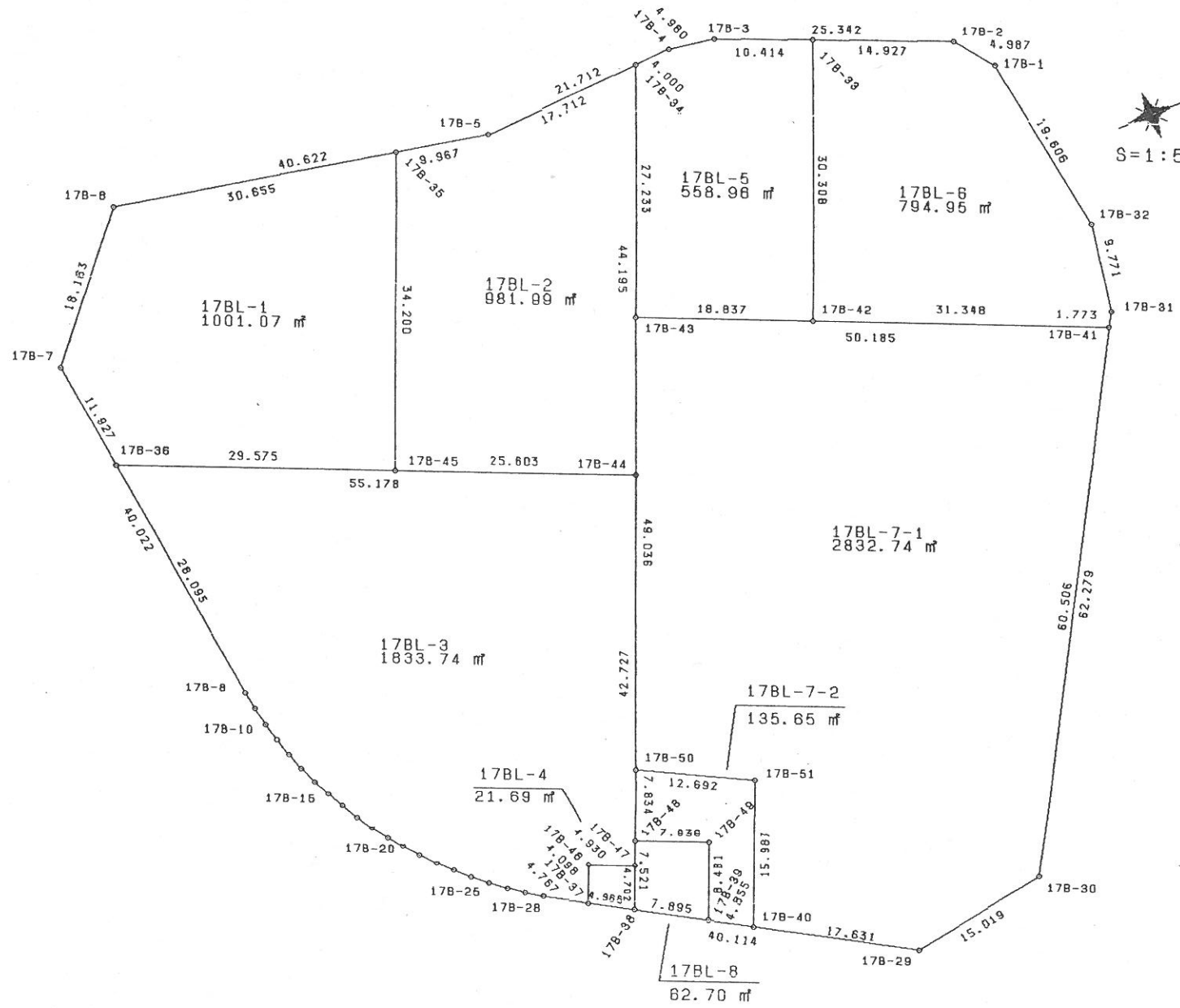
96081.86

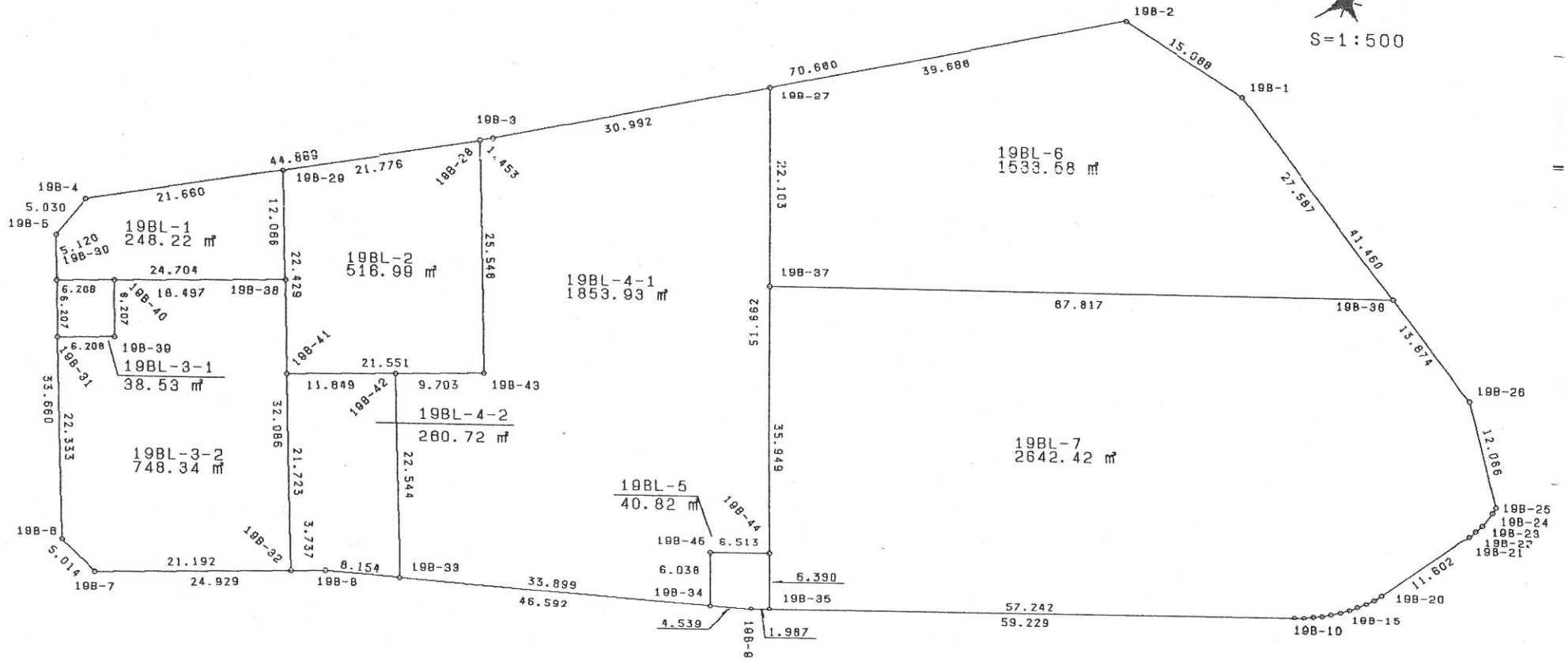
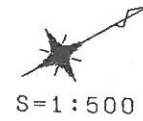
調整池-3
6602.16

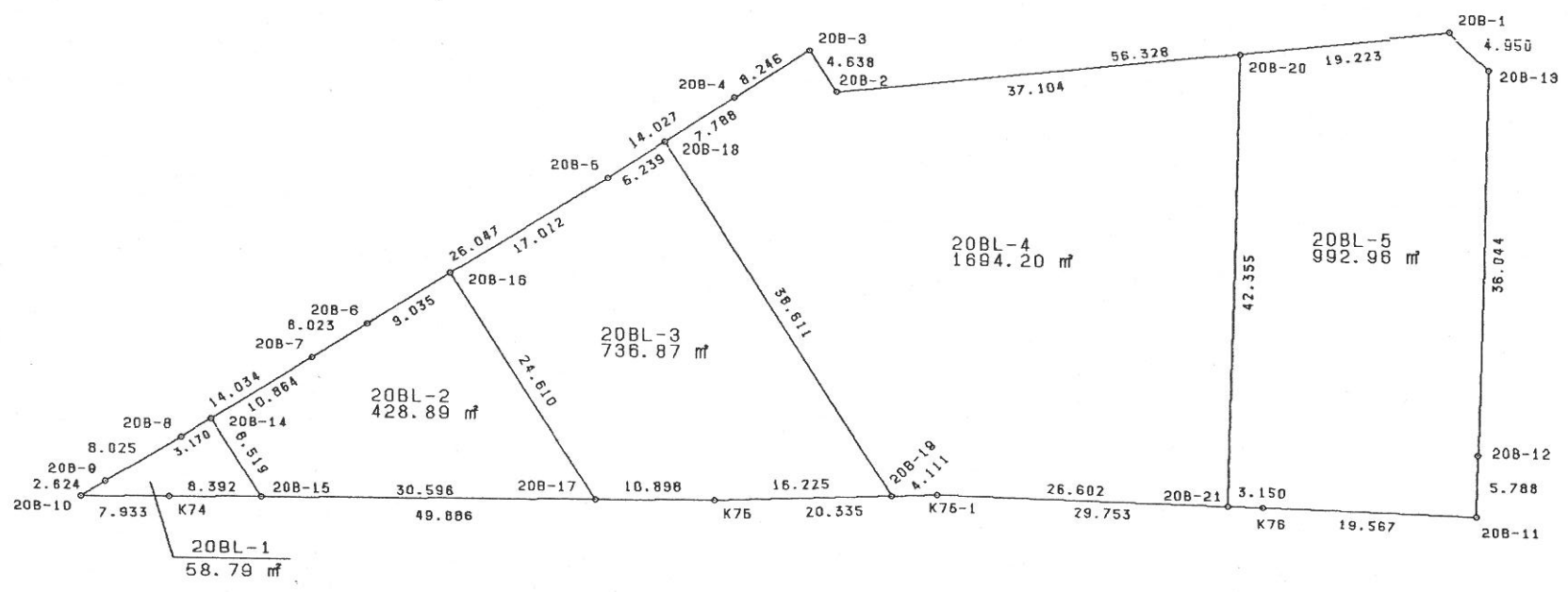
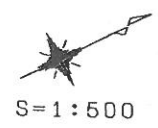
10000.00
(漁業無線局)

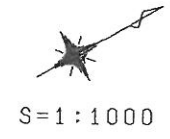
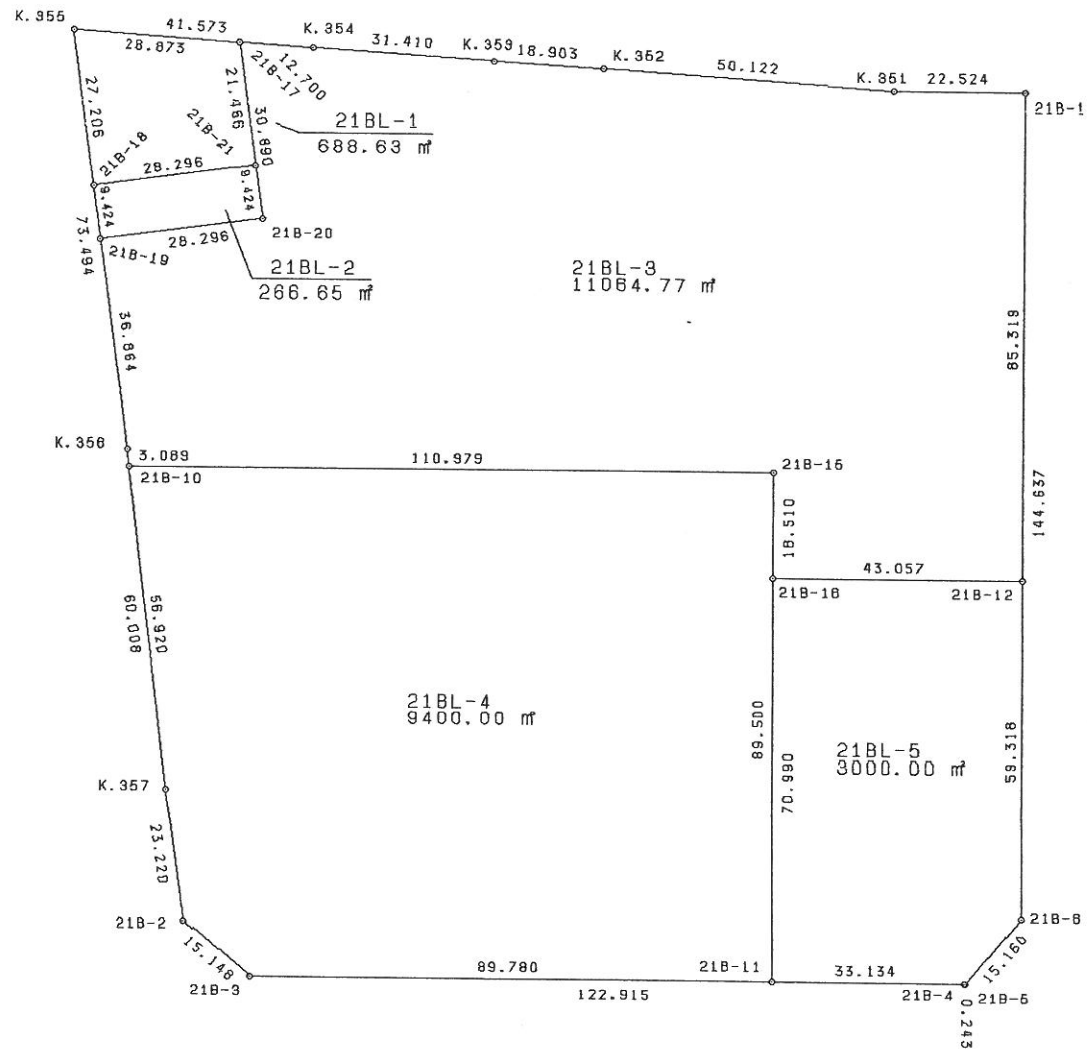
HK54
177-15-32 122.567
177-14-51 87.823
24.369
219-32-22
27489
27092
238-8-24 119.821
38-9-31 87.454
HK53
238-11-21 110.183
38-11-39 113.985
HK52
238-9-33 80.424
123.440
33-12-57 37.09
HK51
182-0-43 111.180
1-59-23 4.412
20-31 42.931
5.57
HK50
32-15-1 78.644
77.172
102-12-43
3.031
5.831
720-22-8 136.013
2096
5.835
122-15-13 152.546
2.616
6.463
15.012
118-41-17 132.762
30-38-21 95.359
29-59-4 196.346
81.278
81.823
30-0-16 71.934
120-6-39 144.197
228.939
120-6-30
120-3-30 72.831
30-1-4 44.012
K91 30-38-38 50.002
30-38-38 4.490
K92 30-38-38 50.002
30-38-46 22.712
K93 29-59-17 50.000
K94 29-59-17 50.000
K95 29-59-17 50.000
K96 29-59-17 50.000
K97 29-59-17 50.000
K98 29-59-17 50.000
K99 29-59-17 50.000
K100 29-59-17 50.000
K101 29-59-17 50.000
R15 22.801
R16 300-22-6 48.876
R2
R3
R15
R16

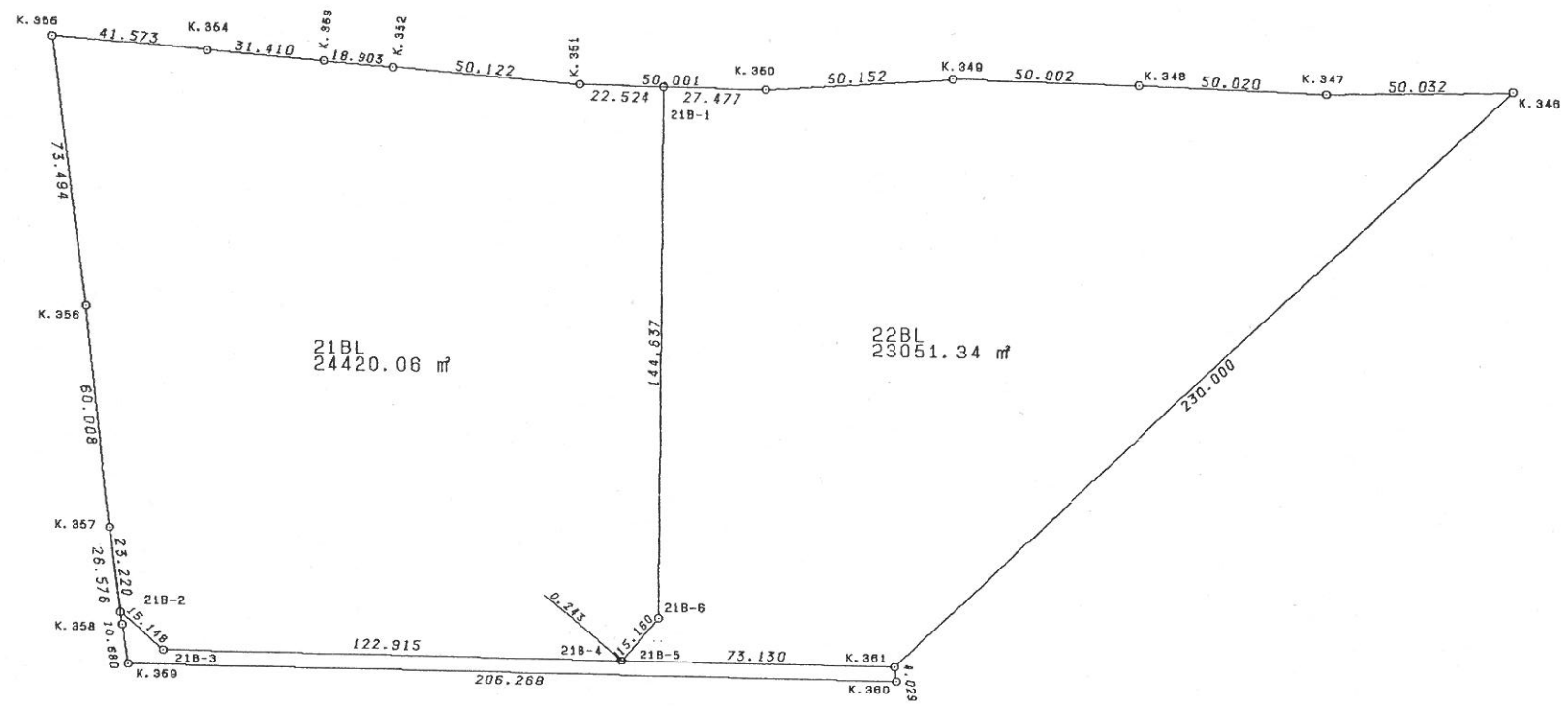


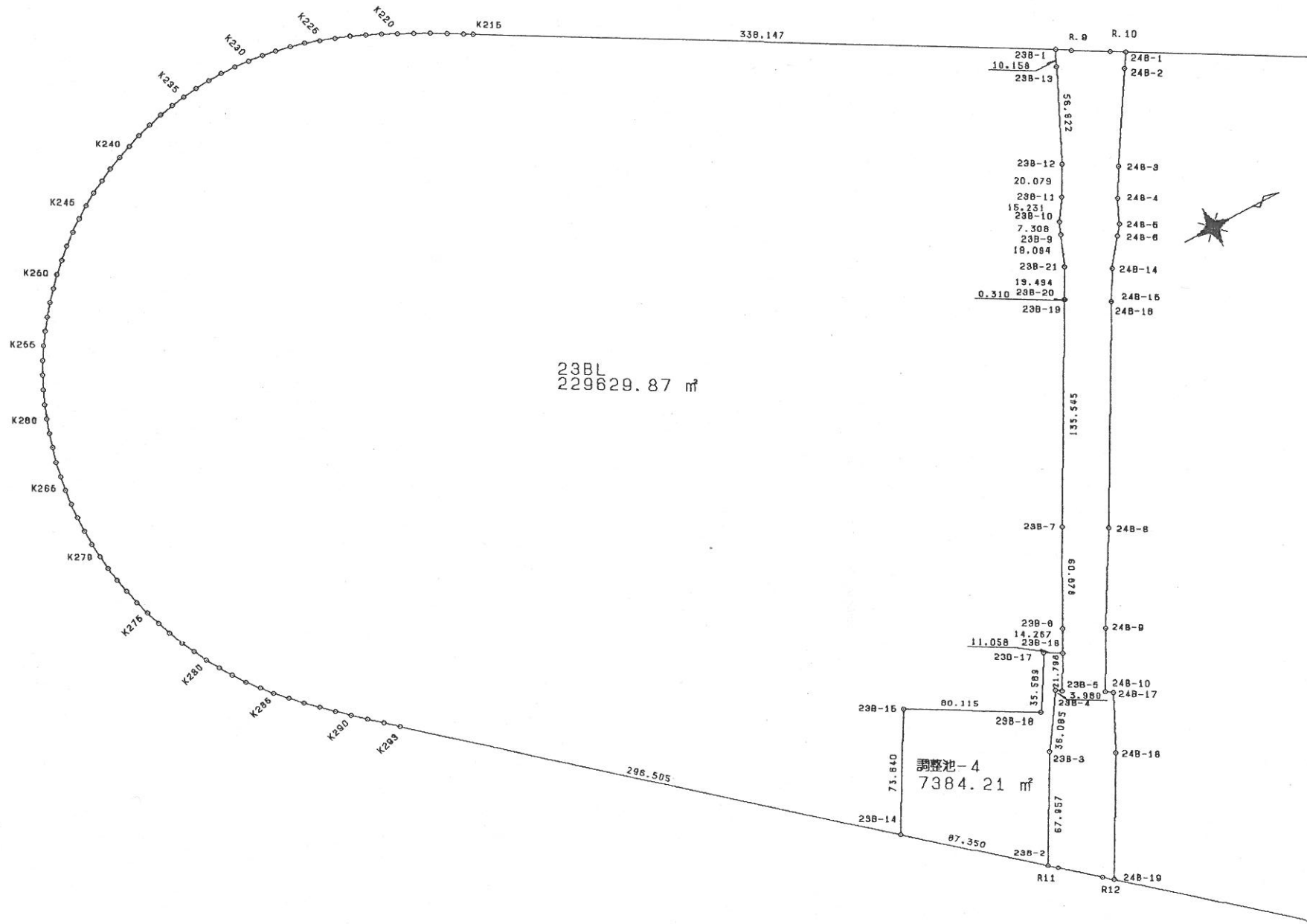


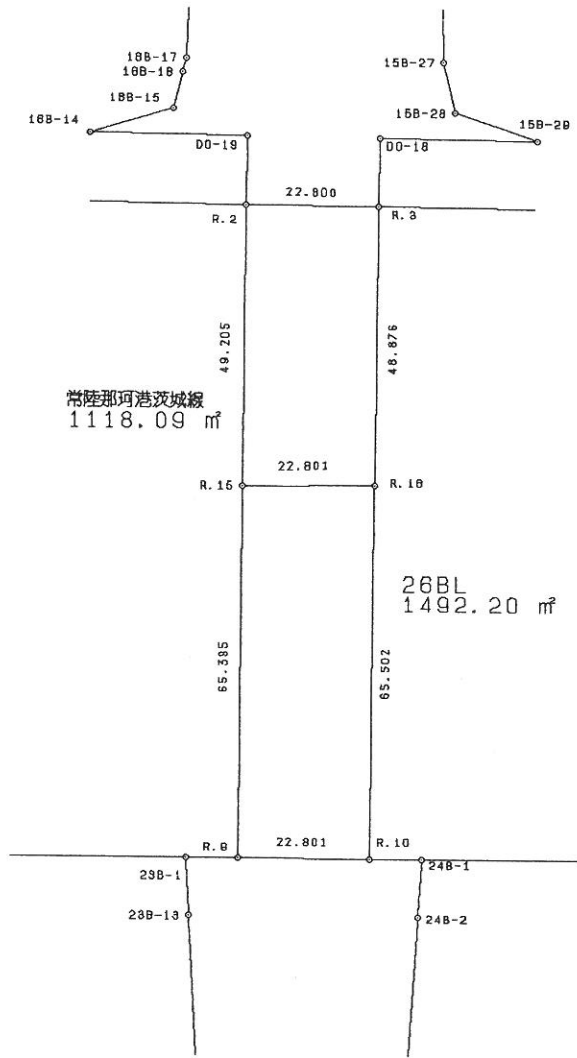












常陸那珂港茨城線
1118.09 m²

26BL
1492.20 m²

