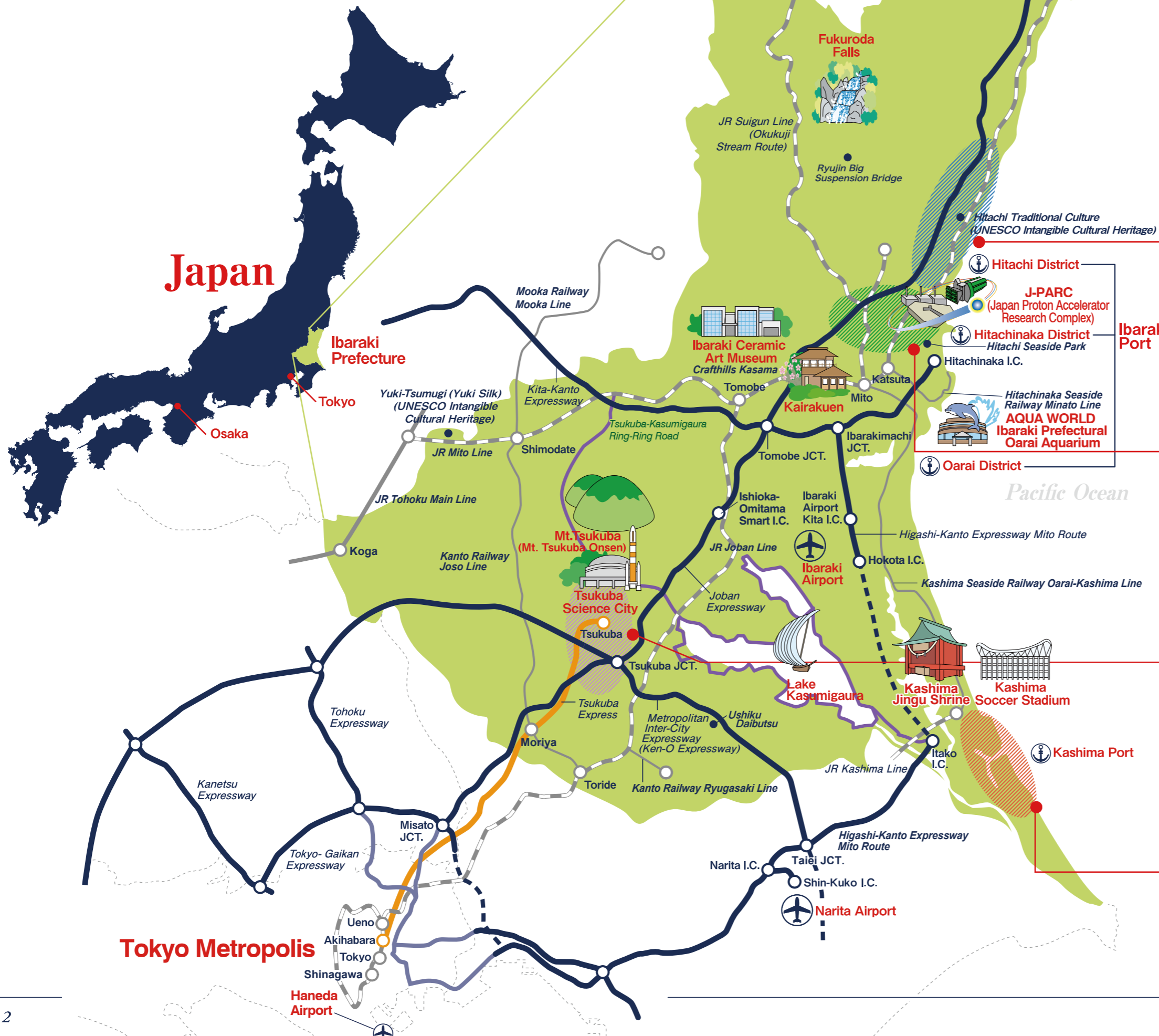




IBARAKI PREFECTURE INFORMATION



Brief Summary of Ibaraki



Various Industrial Centers

Hitachi Area

Concentration of electrical and other machinery manufacturers

- About 1,073 companies are located here, mainly the supporting companies of Hitachi, Ltd. Machinery and electrical appliance manufacturing.

Tokai Area

Concentration of nuclear power research institutions

- Japan Atomic Energy Agency
- Tokyo University, Ibaraki University, and other universities
- Japan Proton Accelerator Research Complex (J-PARC) opened in Dec. 2008
- Leading the world in neutrino, materials, and life science research
- Ibaraki has laboratory equipment for material and life science research

Tsukuba Area

Concentration of research institutions

- 29 national, collaboration, and other education and research institutions
- Designation of Tsukuba International Strategic Zone (2011.12.22)
- Promotion of the practical use of robots from next-generation cancer treatment to daily life support

Kashima Area

Industrial materials manufacturing hub

- Around 173 iron, steel, and petrochemical manufacturing companies

Distinguishing Features of Ibaraki

Rankings are among Japan's 47 Prefectures.
\$1 USD = 109 JPY (2020 Jan.)

 Population 2.877 million (October 1st 2018) Ranked 11th	 Number of Foreign Residents 67,986 (late June 2019) Ranked 10th	 Total Area 6,097.33 km ² (October 1st 2018) Ranked 24th	 Habitable Area 3,975.12 km ² (October 1st 2017) Ranked 4th	 Agricultural Production Output \$4.55 billion (2017) Ranked 3rd
 Gross Prefectural Production \$119.78 billion (2016) Ranked 11th	 Prefectural Income Per Capita \$28,587 (2016) Ranked 10th	 Product Shipment Value \$112.65 billion (2017) Ranked 7th	 Factory Surface Area (Excluding electric industries) 147ha (2018) Ranked 1st	 Coastal Fishery Output 259,031 metric tons (2018) Ranked 3rd



Ibara Hiyori
Ibaraki Prefecture certified Vtuber

Transportation in Ibaraki



Ibaraki Airport

The Tokyo Metropolitan Area's 3rd major airport, shouldering the Kita-Kanto region's flight demands and designed for LCCs.

Tsukuba Express

A high speed railway that can take you from Tsukuba to Akihabara (Tokyo) in just 45 minutes.



Ibaraki Port Hitachinaka District

A new international container port for the Kita-Kanto trade route.



Metropolitan Inter-City Expressway

Under the ongoing maintenance as one of the Metropolitan Three Ring Highways, the Expressway connects cities such as Tsukuba, Yokohama and Narita.
(The Ibaraki Section has opened in Feb. of 2017)

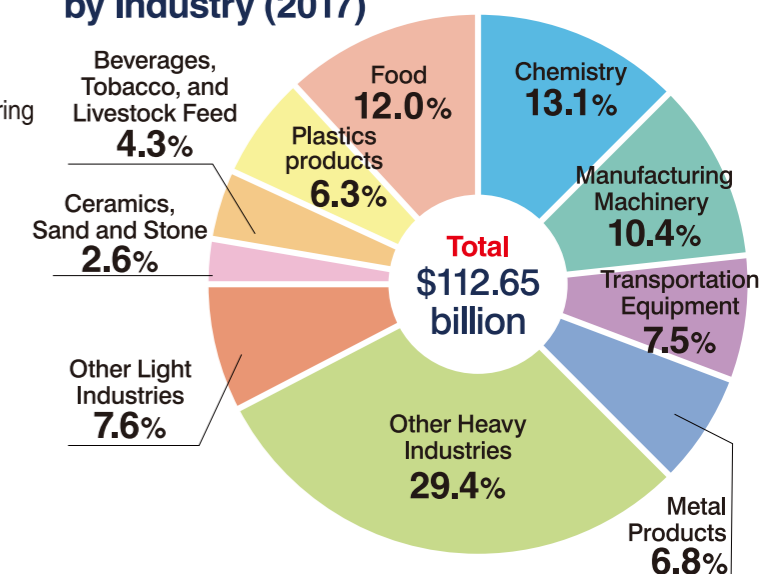


Key Companies with Factories in Ibaraki

In addition to factories of global companies that represent Japan, there are also many small and medium-sized enterprises led by unique corporate managers, and foreign-founded R&D centers, which are supporting Japan's basic technology and local economy.

- Hitachi Ltd.** / Electrical machinery
- Nippon Steel Corporation** / Steel
- Hino Motors** / Truck and bus manufacturing
- Komatsu Ltd.** / Construction machinery manufacturing
- Hitachi Construction Machinery** / Construction machinery manufacturing
- Fanuc** / Industrial robot manufacturing
- Astellas Pharma Inc.** / pharmaceutical
- Ibasei Ltd.** / Portable hydroelectric generator
- GLIT** / Collaboration of manufacture enterprises
- Cyberdyne Inc.** / Medical welfare equipment
- Miraisens Inc.** / 3D Haptics technology
- Warspace** / Design and Development of satellites
- IRDA** / Collaboration of R&D companies
- Autoliv** / R&D of automobile safety parts
- Valeo Japan** / R&D of automobile-related system

Product Shipment Value Percentage by Industry (2017)



Tsukuba Science City

Tsukuba, with its large number of research institutes and researchers, is the largest science and technology center of its type in Japan. Researchers and exchange students from overseas make it a truly international city.

Number of Researchers in Tsukuba

20,758 (2016)

(with doctoral-level qualifications:7,995)

Number of Foreign Researchers in Tsukuba

7,277 (2016)

Japan Aerospace Exploration Agency (JAXA)

Japan's national institution of aerospace exploration R&D responsible for all space related policy. The Tsukuba Space Center is the central hub taking on the task of space development.

National Institute of Advanced Industrial Science and Technology (AIST)

AIST carries out comprehensive research and development into all facets of industrial technology and is one of Japan's largest research institutions. Through cooperative partnerships with university and industry players, AIST is also focused on new industries.

National Institute for Material Science (NIMS)

The institute focuses mainly on the fundamental and prioritized R&D of material and substance. In particular, promotional measures are put forward for innovation in the nanotechnology and materials fields.

Holding International Conferences

Ibaraki Prefecture is also the stage for many important international conference, such as the G7 Ibaraki-Tsukuba Ministerial Meeting on Science and Technology (May 2016) and the G20 Ibaraki-Tsukuba Ministerial Meeting on Trade and Digital Economy (June 2019). Convention facilities are located in various places within the prefecture, including the Tsukuba International Conference Center, are available for events such as international conferences, conventions, and corporate training.



Rich Lands and the Bounty of the Sea



Ibaraki has a mild climate, and is comprised of vast plains as well as natural environments rich in water and greenery such as Lake Kasumigaura and Mt. Tsukuba. Blessed with these ideal conditions, it is one of Japan's biggest agricultural and marine production areas, and plays an important role in the supply of food to the Greater Tokyo Area.



Melon

Ibaraki Prefecture is Japan's largest producer of melons, boasting the highest production volume in Japan for 20 consecutive years. A wide variety of melons are cultivated in Ibaraki Prefecture, and the shipping period is as long as April to November, so you can taste the melons during its season.



Hitachi -Wagyu- Beef

Branded Wagyu, Hitachi Wagyu-Beef is one of Ibaraki Prefecture's pride as it is ranked top tier as level 4 or 5 in the meat trade standard A and B category, among the Japanese Black cattle raised for 30 months through polished breeding management technology and with carefully selected feeds by its designated breeders.



Sweet Potato

Ibaraki Prefecture is ranked No.2 in Japan for cultivated area and production of Kansho (Sweet Potato). The most commonly grown sweet potato in the prefecture is "Beniazuma" known for its high glucose content. In recent years "Benimasari" is being cultivated more and more, and promoted for its silky and moist texture.



Asian Pears

Ibaraki Prefecture is the top 2nd producer of Asian pears in Japan. Starting from Kosui in July, delicious Asian pears such as Hosui, Akizuki, and Ibaraki's original Keisui, Niitaka, and Nikkori can be enjoyed until the end of October.

Major Agricultural Products (2017)

Ranked 1st Nationally

Eggs, Sweet Potato, Cabbage, Melon, Lotus Root, Green Pepper, Dried Potato, Mizuna, Spinach, Plant Cuttings, Bok Choy, Lawn, Chestnut, and Celery.

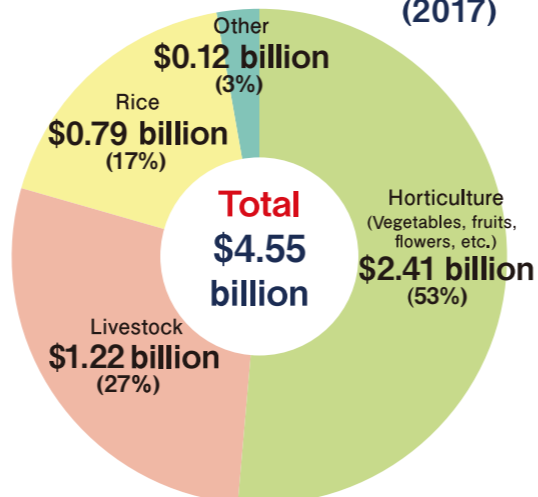
Ranked 2nd Nationally

Lettuce, Asian Pears, and Peanuts.

Ranked 3rd Nationally

Green Onion, Chinese Chive, Sweet Corn, Burdock, Pumpkin, Chrysanthemum Green, Shiso, Chinese Scallion, Mushroom, Japanese Parsley, Broad Beans, and Konnyaku Potato.

Agricultural Production Output (2017)



Ibaraki's Sake

Although Ibaraki Prefecture is neighboring the Tokyo metropolitan, the rich nature of the prefecture is home to about 40 sake breweries, the largest in Kanto region. Each brewery makes their own unique iconic sake and export to all over the world.



Hitachi Seaside Park Hitachinaka City



The park is known as "flower paradise" and is famous for its enormously gorgeous flower field. It is listed by CNN as one of Japan's 31 Most Beautiful Places. The Nemophila covered hills are a must-see scenery in Japan.

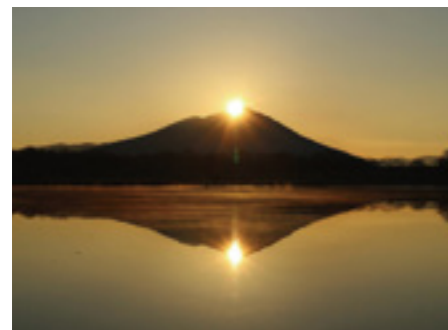
Access: 15 minutes by bus from Katsuta Station of the JR Joban Line



Kairakuen Mito City

One of Japan's Three Great Gardens, Kairakuen is most attractive during the plum blossom season, which usually takes place in late February and March. During this time, the garden hosts the Plum Blossom Festival featuring the plum tree forest, where one hundred different plum tree varieties are planted. It is recognized by Japan Heritage in 2015.

Access: 20 minutes by bus from Mito Station of the JR Joban Line.



Mt. Tsukuba Tsukuba City

One of the most famous mountains in Japan as known by "Fuji of the West, Tsukuba of the East". During sunset, the granite rocks change color, and therefore the mountain is also called as the "purple mountain". It is the smallest in height among the 100 Famous Japanese Mountains. One can enjoy the beautiful scenery at the peak of the mountain summit by hiking, ropeway, or cable car.

Access: 40 minutes by bus from TX Tsukuba station of the Tsukuba express Line



Oarai Isosaki Jinja, Kamiiso-no-Torii-gate Oarai Town

The torii-gate makes the spot where two Gods was said to have once descended from heaven in early Heian era, attracting many visitors come to admire the sun rise seen from this Torii-gate. Lord Tokugawa Mitsukuni, struck by its beauty, once composed a poem to praise the scenery.

Access: 5 minutes by taxi from Oarai Station of the Kashima Seaside Railway Oarai-Kashima Line

Fukuroda Falls

Daigo Town

Fukuroda Falls is one of the three great waterfalls of Japan with a width of 73m and height of 120m divided into four tiers. According to record remained from the famous Heian period poet Saigyō Hoshi, he praised the Fukuroda Falls by saying "One will not understand its beauty if he doesn't visit here at least once during each season." Therefore the falls are also called "Four Visit Falls" in literary works.

Access: 10 minutes by bus from Fukuroda Station of the JR Suigun Line.



Ryujin Big Suspension Bridge

Hitachiota City

Ryujin suspension bridge is a giant suspension bridge over the V shaped Ryujin Gorge in Okukuji Prefectural Natural Park. Its length reaches 375 meters, making it one of the longest pedestrian bridges in Japan. Bungee jumping from the bridge is also popular. One can experience thrill and sense of freedom when bungee jumping from a height of 100m above the water surface.

Access: 45 minutes by car from Hitachi Minami Ota IC of the Joban Expressway

Kasama Pottery Kasama City



Currently having over 200 kilns, Kasama Pottery boasts a history of over 200 years and dates back to the Edo period. While there are skilled craftsmen that have inherited the traditional craft, there are also many ceramists with a modern sense creating various works from everyday items to accessories and objet d'art.



Hitachi Cherry-Blossom Festival Hitachi City

Beautiful cherry blossoms along the Heiwa street in Hitachi City is selected as Japan's 100 Cherry Blossom Scenic Spots.

The biggest highlight of the festival is the parade floats also known as "Hitachi Fuyumono", this was designated as a National important tangible and intangible folk cultural property, and inscribed on the UNESCO Intangible Cultural Heritage List. (Being held during early April to middle of April)

Access: One minute walk from Hitachi Station of the JR Joban Line



AQUA WORLD Ibaraki Prefectural Oarai Aquarium Oarai Town

One of the biggest aquariums in Japan, the place takes pride in its two of Japan's No.1s. One is number of variety in sharks in aquarium and the other is the largest tank dedicated for sunfishes. The aquarium is home to about 580 kinds of 68,000 sea animals.

Access: 15 minutes by bus from Oarai Station of the Kashima Seaside Railway Oarai-Kashima Line



Ushiku Daibutsu Ushiku City

Stands an impressive 120m in height, it is registered as the largest bronze statue in the world by the Guinness Book of Records. One can observe the beautiful landscape from within the statue as well as enjoy participating in the sutra-copying event.

Access: 20-30 minutes by bus from Ushiku Station of the JR Joban Line



Kashima Jingu Shrine Kashima City

Enshrined there is the deity of Takemikazuchi-no-ookami, revered as a deity of the martial arts. The shrine was built in 660 BC, and is the head shrine for more than 600 Kashima shrines all over Japan. Surrounded by the spiritual forest, it is considered one of the most sacred place in Ibaraki.

Access: 10 minute-walk from Kashima-Jingu Station of the JR Kashima Line



Ibaraki Flower Park Ishioka City

A theme park of flower and green located in the plain below Mt. Tsukuba. The park is as wide as 30 ha with terraces of roses inside. The rose is the iconic flower of Ibaraki Prefecture and there are about 30,000 roots and 800 different kinds of roses here. There are rose festivals in spring and autumn, and in winter the park is decorated by illumination.

Access: 30 minutes by bus from Ishioka Station of the JR Joban Line



Tsukuba-Kasumigaura Ring-Ring Road

Surrounding area of Mt. Tsukuba and Lake Kasumigaura

Tsukuba-Kasumigaura Ring-Ring Road is a cycling course with total length of 180 km, where one can enjoy a great variety of experiences the region has to offer, such as lakeside landscape of Kasumigaura, a part of the Waterside Tsukuba National Park, the rich natural scenery of Mt. Tsukuba, as well as historical and cultural assets represented by the Kashima Jingu.

Traditional Artifacts of Ibaraki



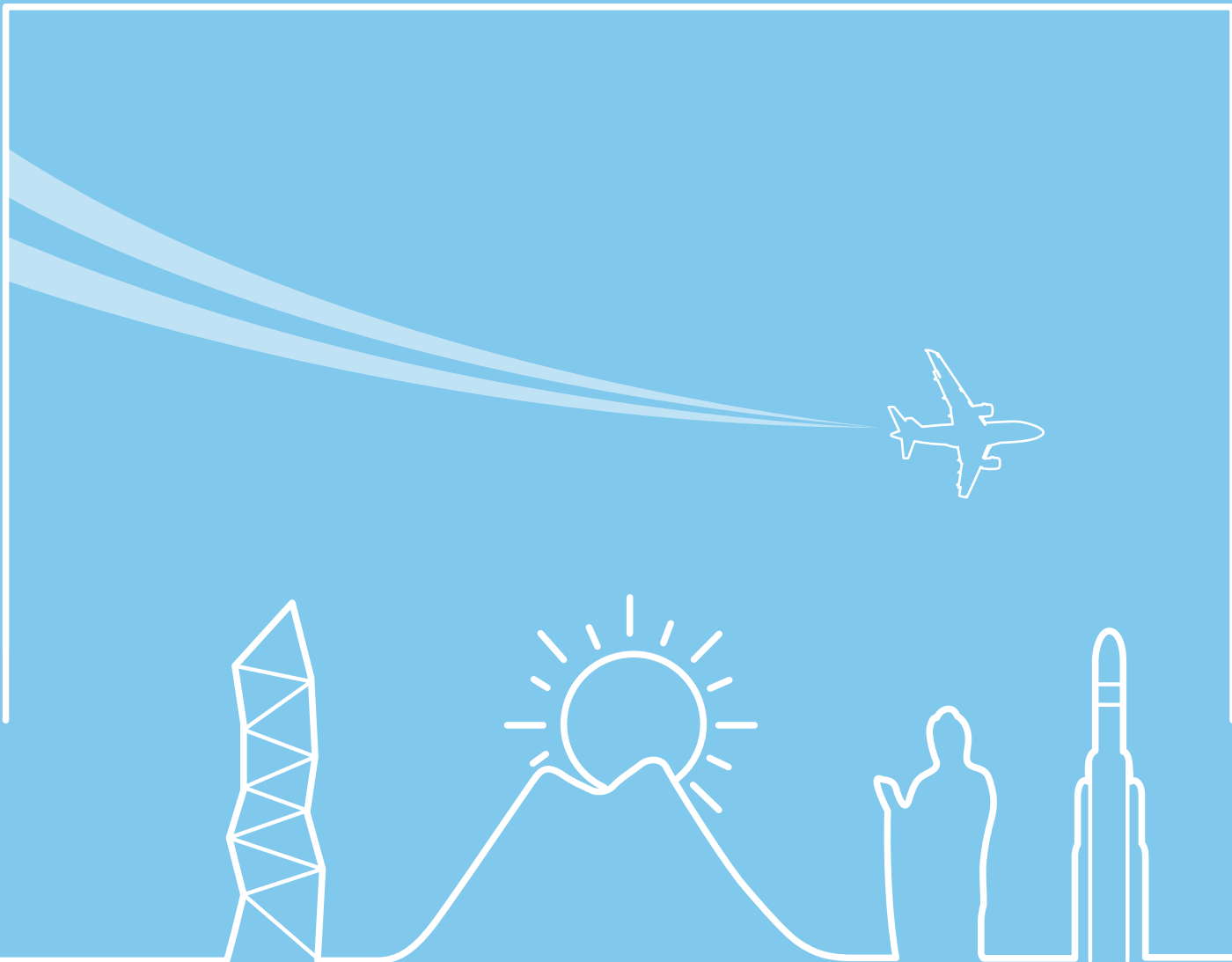
Yuki-Tsumugi (Yuki Silk) Yuki City

Having a history of over 1000 years, Yuki Silk is produced entirely by hand, and can take over one year to complete. The production process was designated as a National Important Intangible Cultural Heritage in 1956, and registered as a UNESCO Intangible Cultural Heritage in November, 2010.



Makabe Stone Lanterns Sakuragawa City

The Makabe region of Sakuragawa City has long been a producer of stone, and when Makabe stone lanterns started being given to temples and shrines as offerings in the middle of the Edo period, they became the basic form for stone lanterns. In order to produce a single lantern, 18 different traditional techniques and methods are used. The durability, sense of weight, and delicate carvings add a hint of elegance to any garden.



IBARAKI PREFECTURE

978-6 Kasahara-cho, Mito-shi, Ibaraki-ken 310-8555 Japan

Tel: +81-29-301-1111

<https://www.pref.ibaraki.jp/>